

FIG. 1

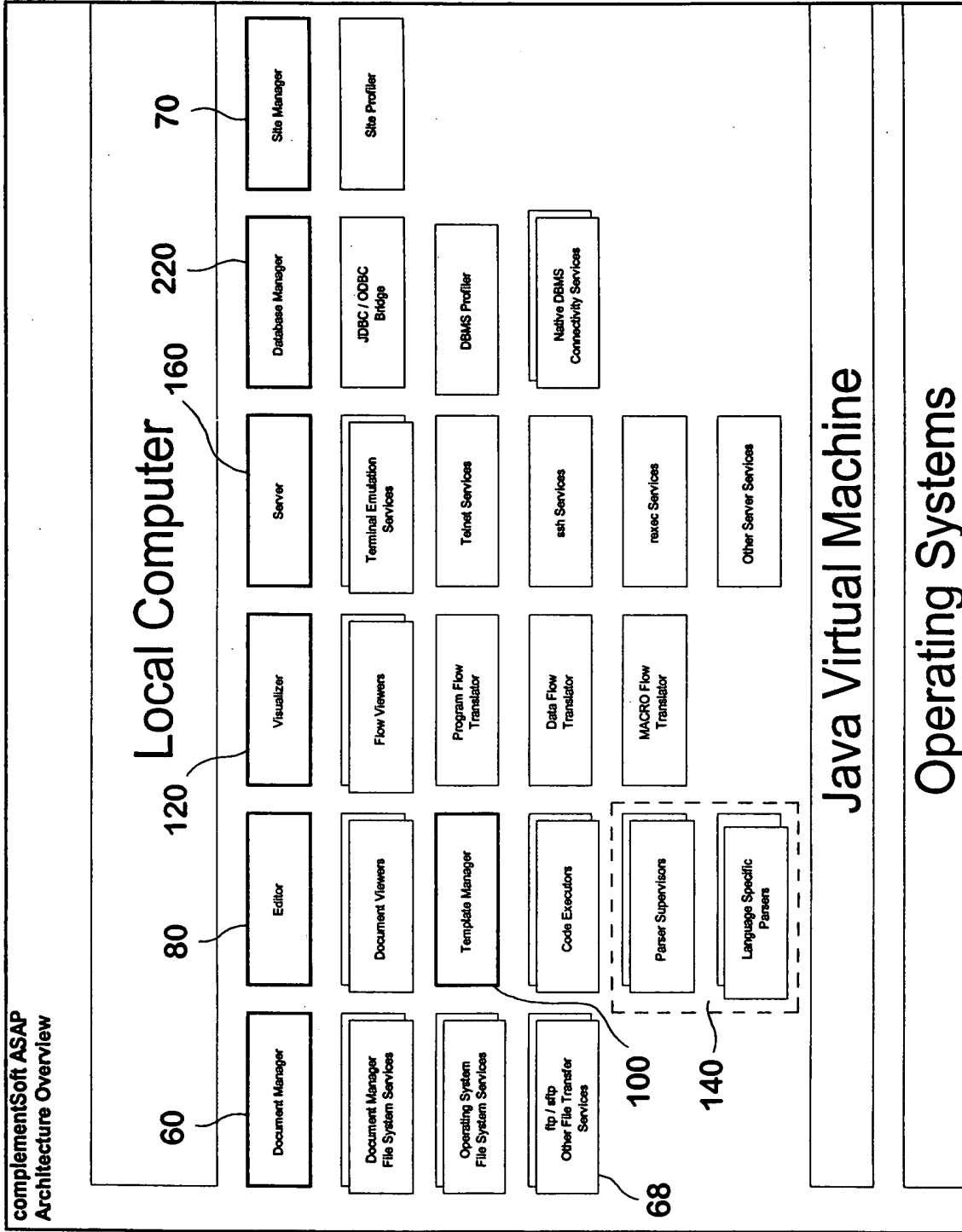
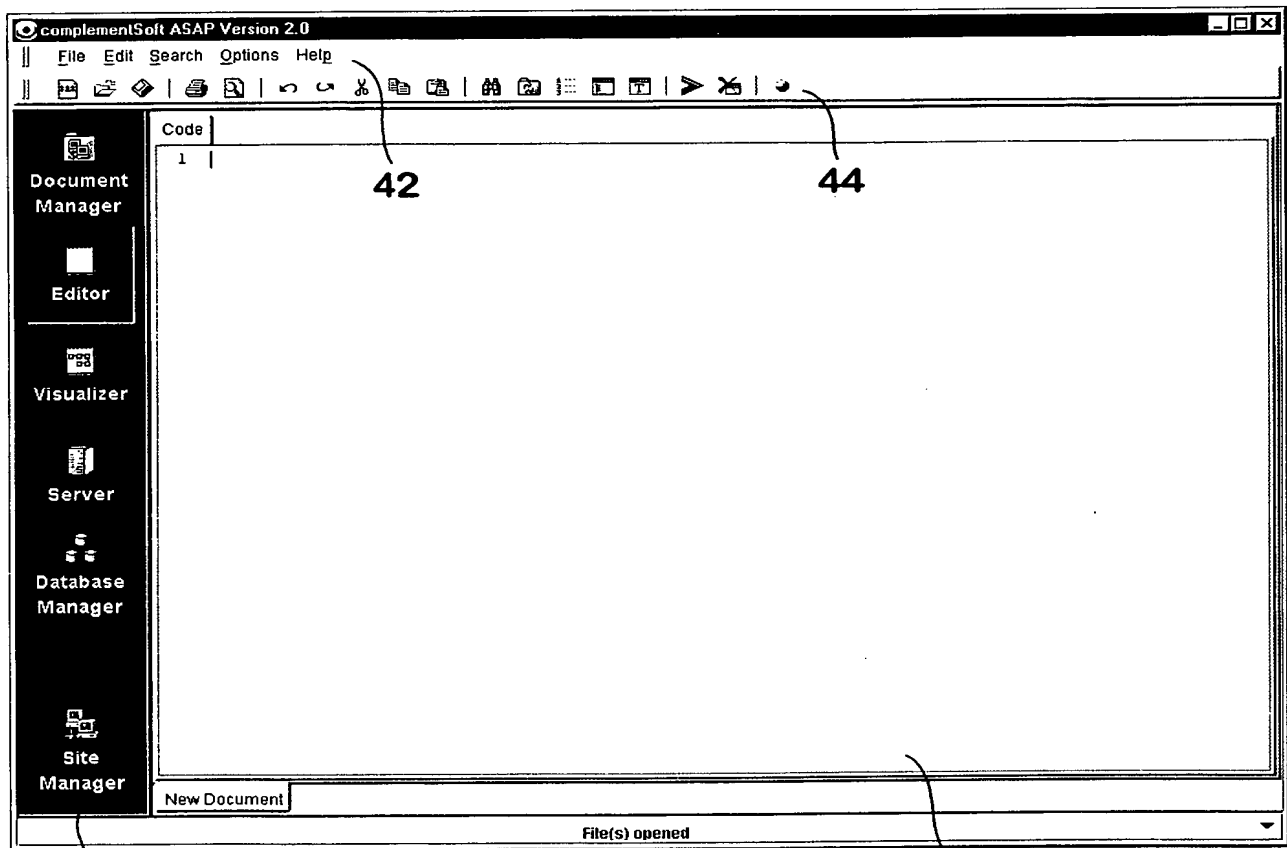


FIG. 2

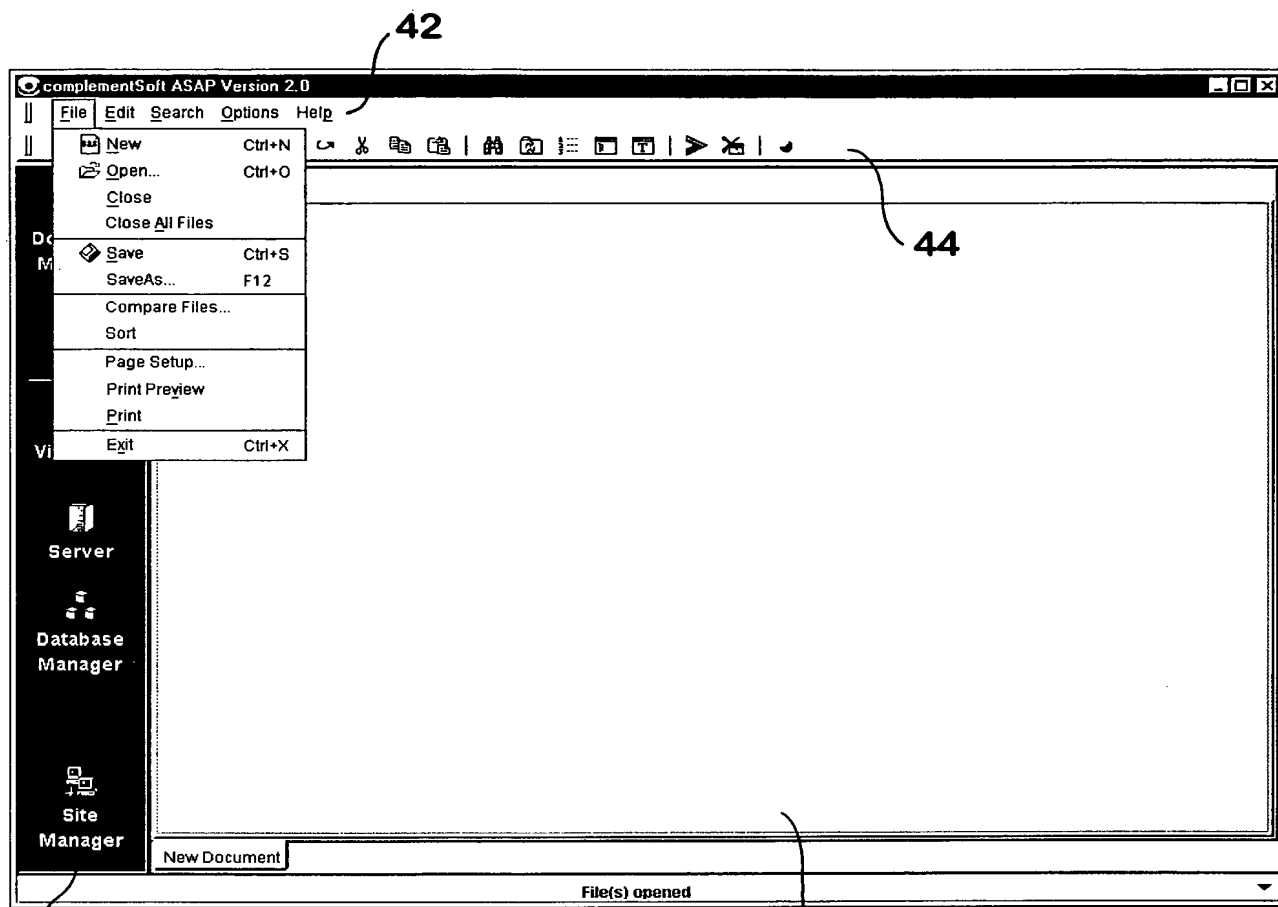


48

80

FIG. 3

46

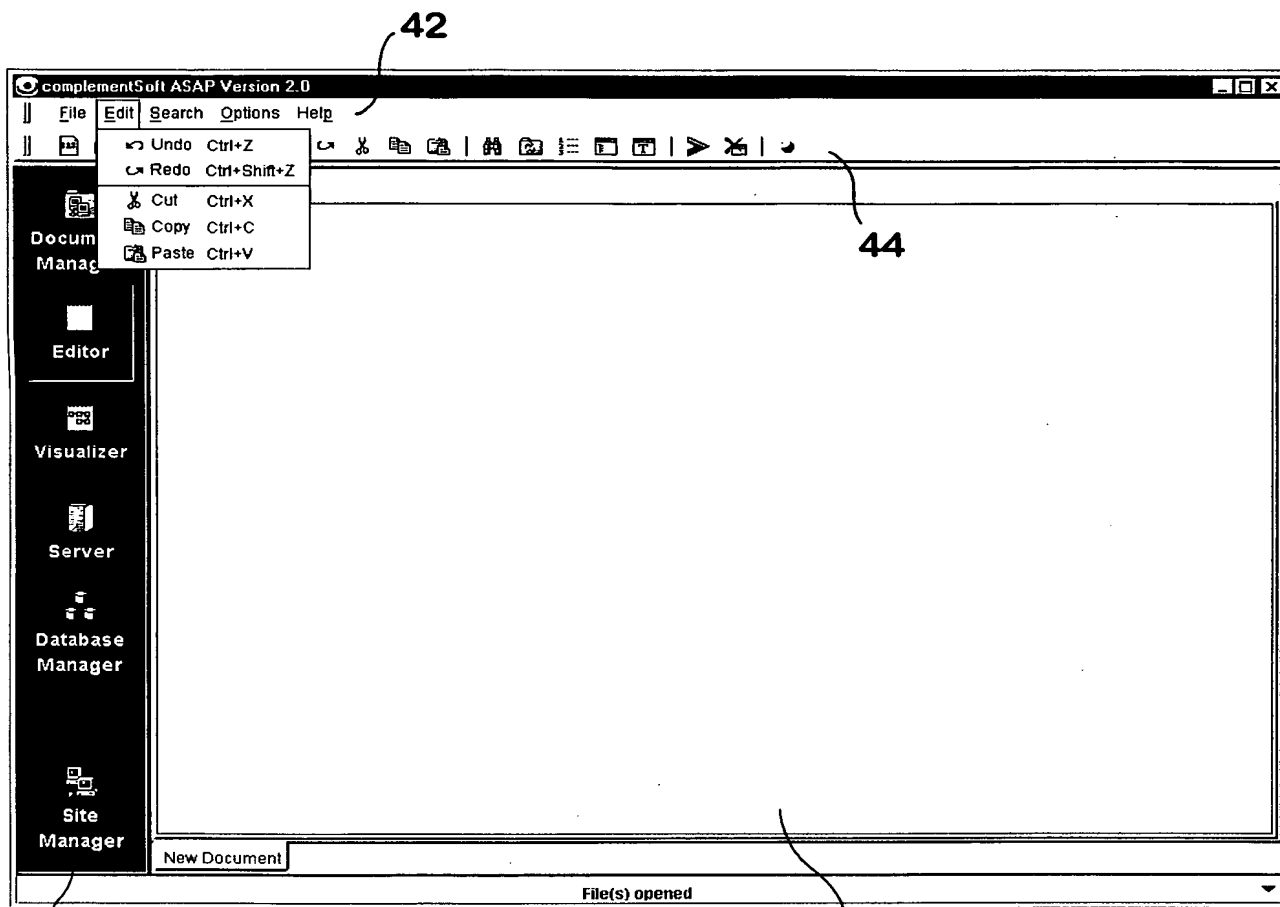


48

46

Menu Item	Functionality
New	Create a new document (a program)
Open	Open an existing document
Close	Close the currently opened document
Save	Save the currently open document
Save As	Save the currently open document using a different name or in a different location
Print Preview	Print Preview of the currently open (active) document
Print	Print the currently open (active) document
Exit	Exit the application

FIG. 4a

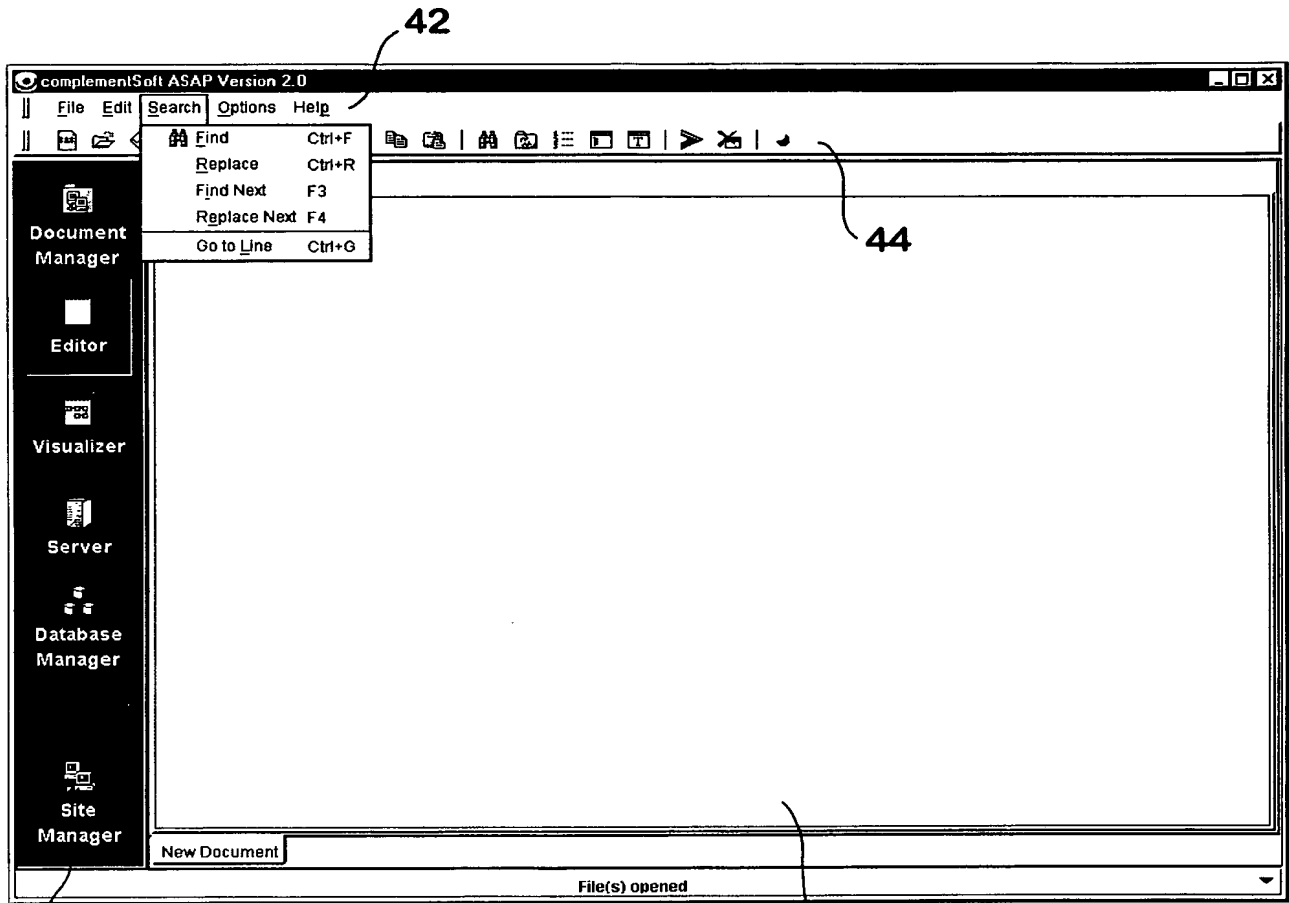


48

46

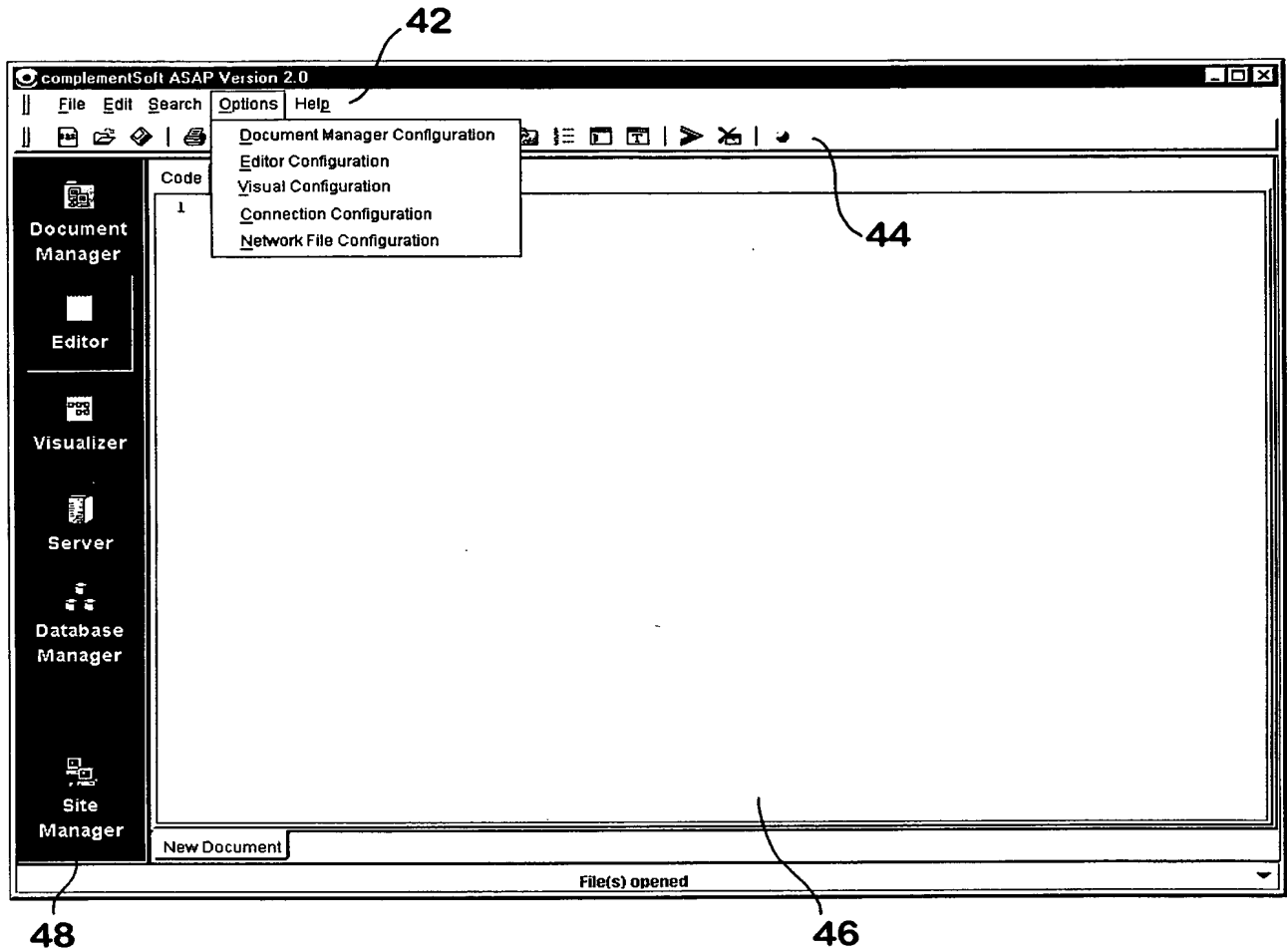
Menu Item	Functionality
Undo	
Redo	
Cut	
Copy	
Paste	

FIG. 4b



Menu Item	Functionality
Find	
Replace	
Find Next	
Replace Next	
Goto Line	Go to the n line in the currently active document

FIG. 4c



Menu Item	Functionality
Document Manager Configuration	Activate the Document Manager Configurator
Editor Configuration	Activate the Editor Configurator
Visual Configuration	Activate the Visual Configurator
Connection Configuration	Activate the Connection Configurator
Network File Configuration	Activate the Network File Configurator

FIG. 4d

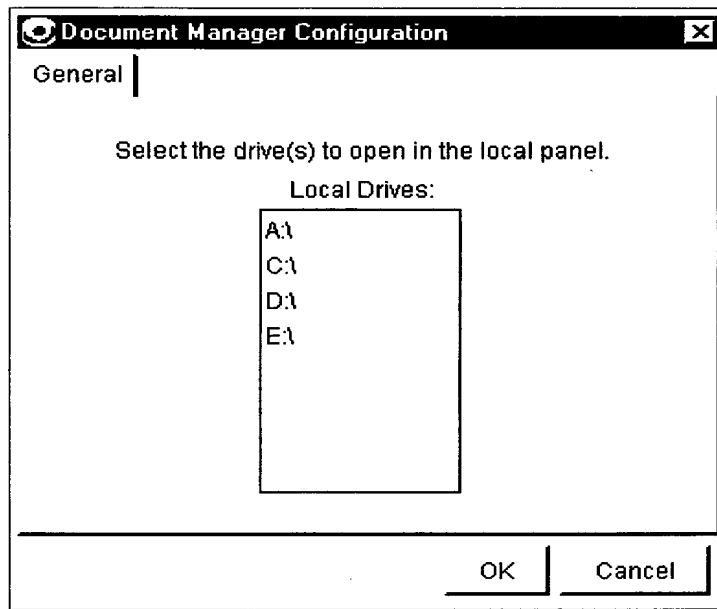


FIG. 4da

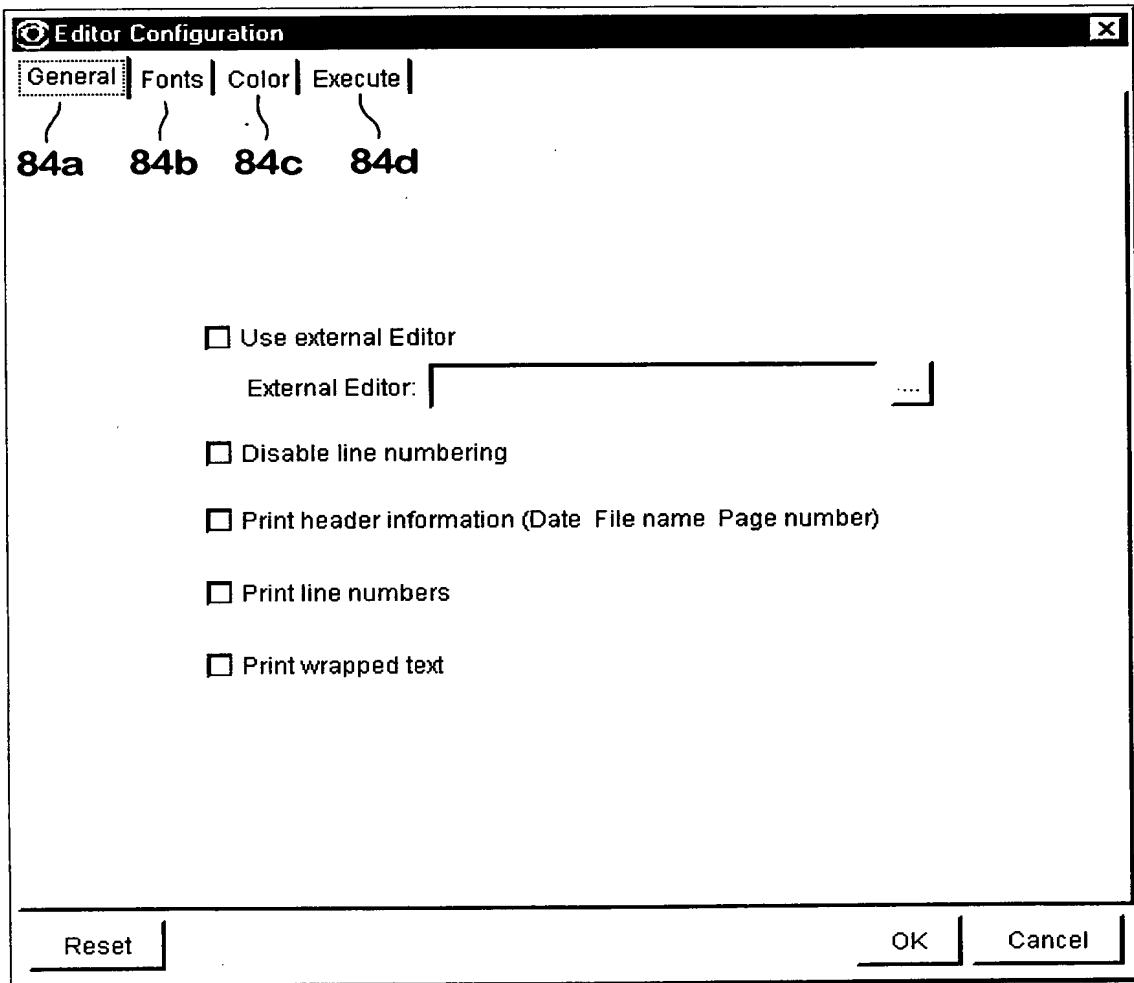


FIG. 4db

The image shows a dialog box titled "Site Manager Configuration" with a close button (X) in the top right corner. The "Connection" tab is selected. The dialog contains several options for network configuration:

- Four radio buttons: "No proxies" (selected), "Firewall with no proxies", "Use proxies", and "No network detection".
- An unchecked checkbox "Enable HTTP proxy".
- An "HTTP Proxy" section with a "Server Name" text field and a "Server Port" spinner box set to "80".
- An unchecked checkbox "Enable SOCKS proxy".
- A "SOCKS Proxy" section with a "Server Name" text field and a "Server Port" spinner box set to "1080".
- Two radio buttons for SOCKS version: "Ver 4" (selected) and "Ver 5".
- An unchecked checkbox "Authentication" located between the SOCKS version options and the "User Name:" and "Password:" text fields.
- At the bottom, there are four buttons: "Test", "OK", "Cancel", and "Apply".

FIG. 4dc

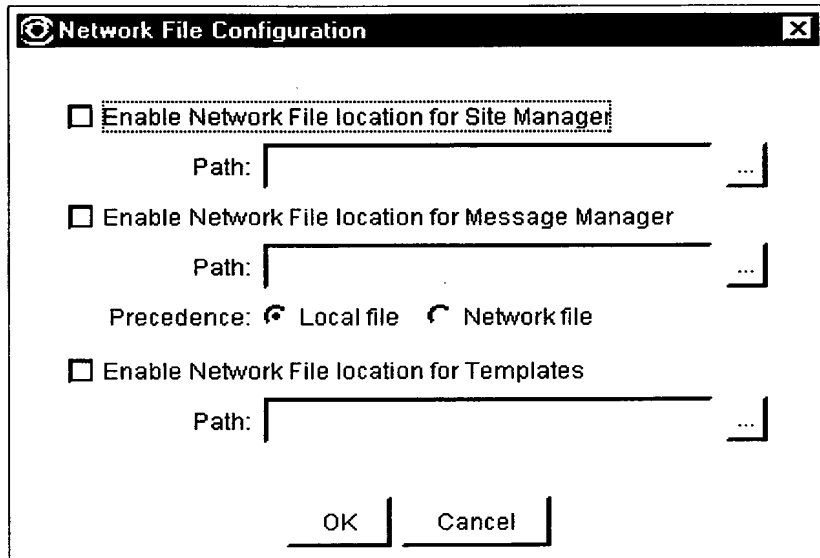
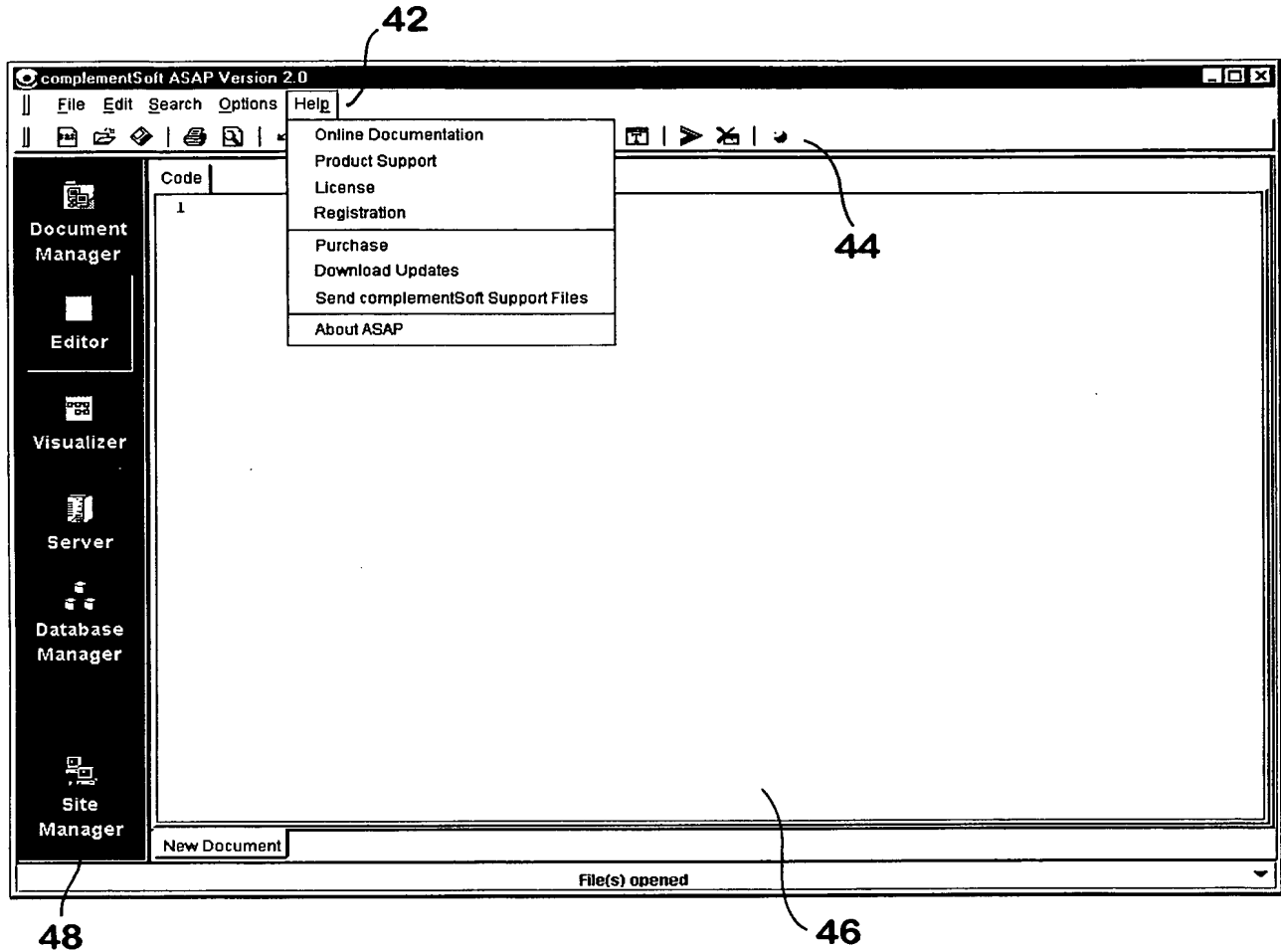
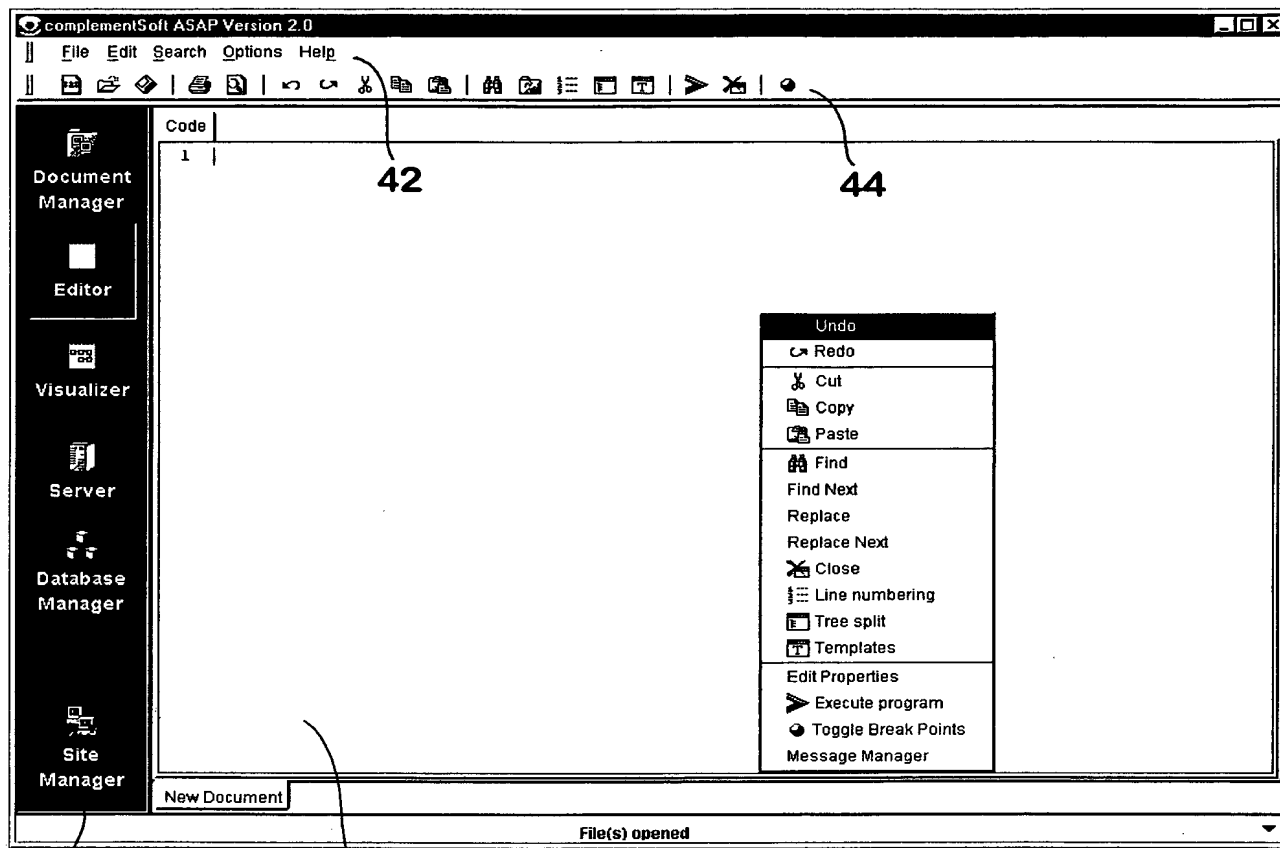


FIG. 4dd



Menu Item	Functionality
On-line Documentation	Show On-line Documentation
Product Support	Displays the Product Support Page with e-mail address, How to . . . and Frequently Asked Questions
License	Detailed license information with the ability to renew and/or upgrade the license
Registration	Perform on-line product registration
Purchase	Displays the complementSoft e-store
Download Updates	Retrieve Product Updates
Send complementsoft Support files	E-mail support files to complementSoft
About ASAP	Version and copyright information

FIG. 4e



48

46

FIG. 4f

Menu Item	Functionality
Undo	
Redo	
Cut	
Copy	
Paste	
Find	
Find Next	
Replace	
Replace Next	
Close	Close the currently active document
Line numbering	Turn line numbering on of off
Tree Split	Activate the Tree View split screen mode
Template Manager	Activate the Template Manager
Edit Properties	Edit the properties (timestamp, originating location, etc.) of the document
Execute Program	<p>Execute the currently active program (i.e., the one that the user is currently editing)</p> <p>The user can further specify the execution mode (i.e., how to execute, with which option turn on/off, etc) and execution location (i.e., where to execute, which server, which execution engine, which location)</p> <p>If the user has previously activated Break-Point execution (see below), then the execution will be carried out based out the break-points, i.e., start at where the user indicate that it should start, end at where the user indicate that it should end and skipping statements as indicated by the user.</p>
Toggle Break Points	<p>Activate / deactivate Break-Point execution.</p> <p>Setup Break-Points if they have not been previously setup.</p> <p>Reset/Remove Break-Points if they have been previously setup</p>
Message Manager	Activate the Message Manager to add, remove, or update the messages in the message repository

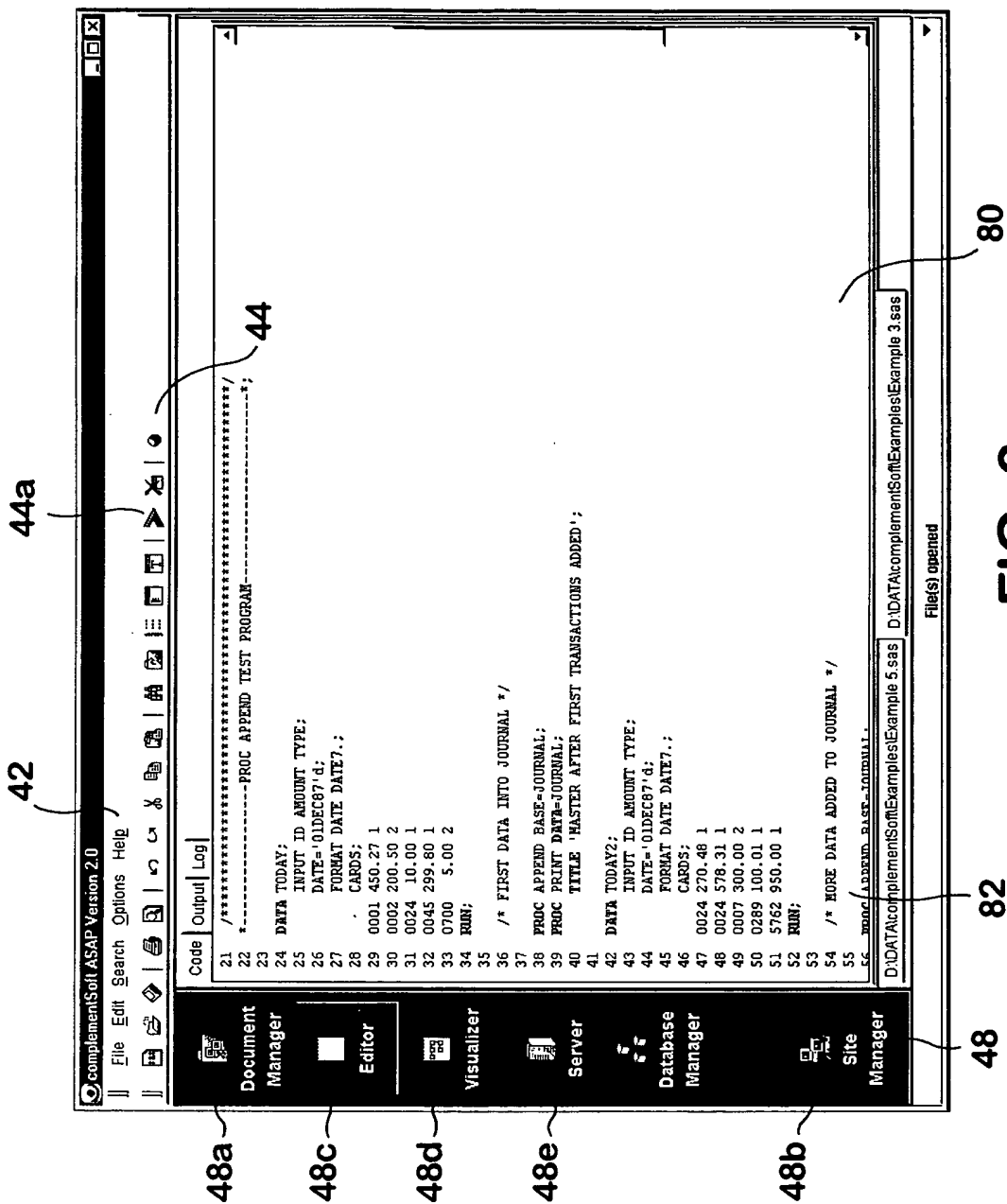
FIG. 4f (continued)

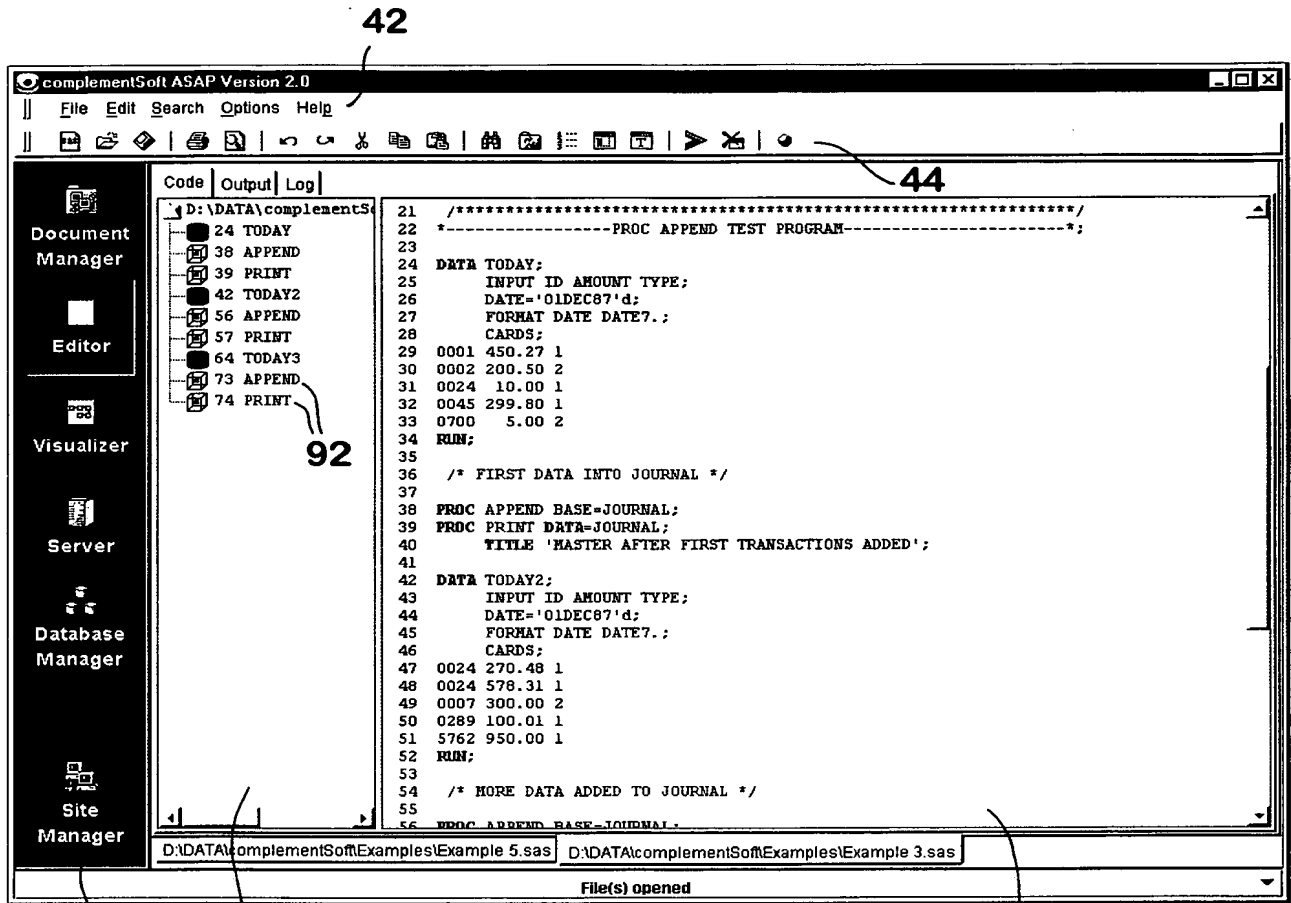
44



Menu Item	Functionality
New	
Open	
Save	
Print	
Print Preview	
Undo	
Redo	
Cut	
Copy	
Paste	
Find	Find a word
Refresh	Refresh the Editor display
Toggle Line Numbers	Show or hide line numbers
Toggle Tree View	Enable or disable Tree View
Template Manager	Activate the Template manager
Execute Program	Execute the currently active program
Close	Close the currently active program
Toggle Break Point Execution	Enable of disable Break Point Execution

FIG. 5





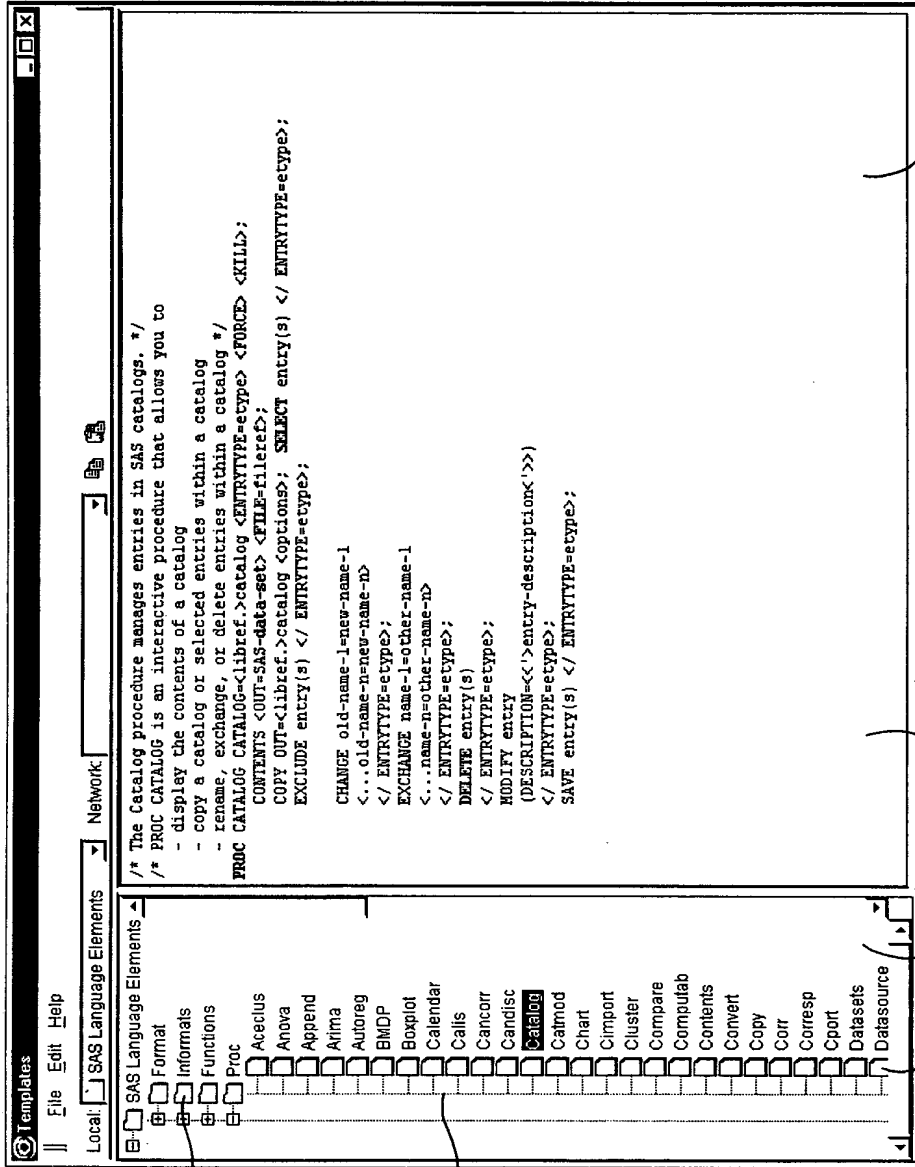
48

82a

FIG. 7

80

82b



105

104

106

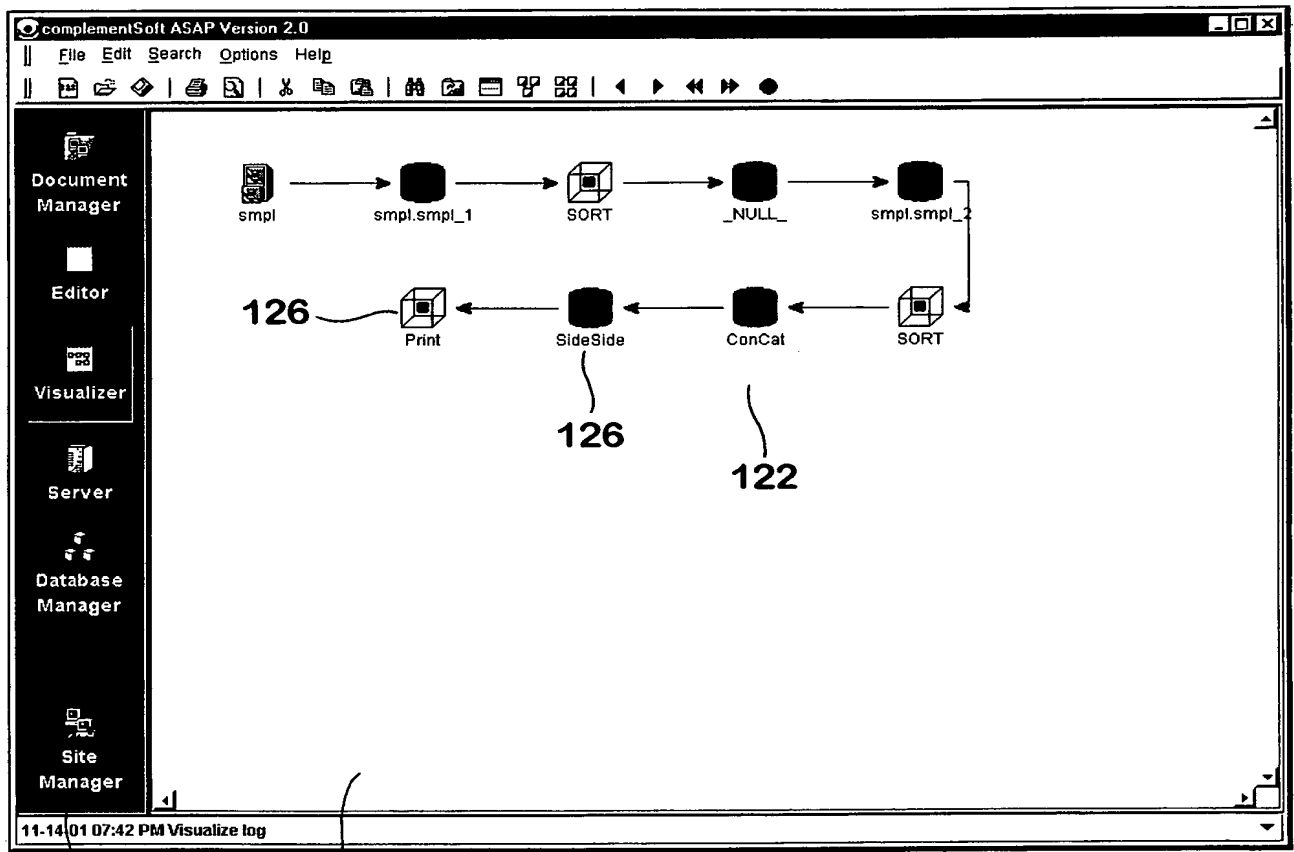
101a

101b

FIG. 8

100

101

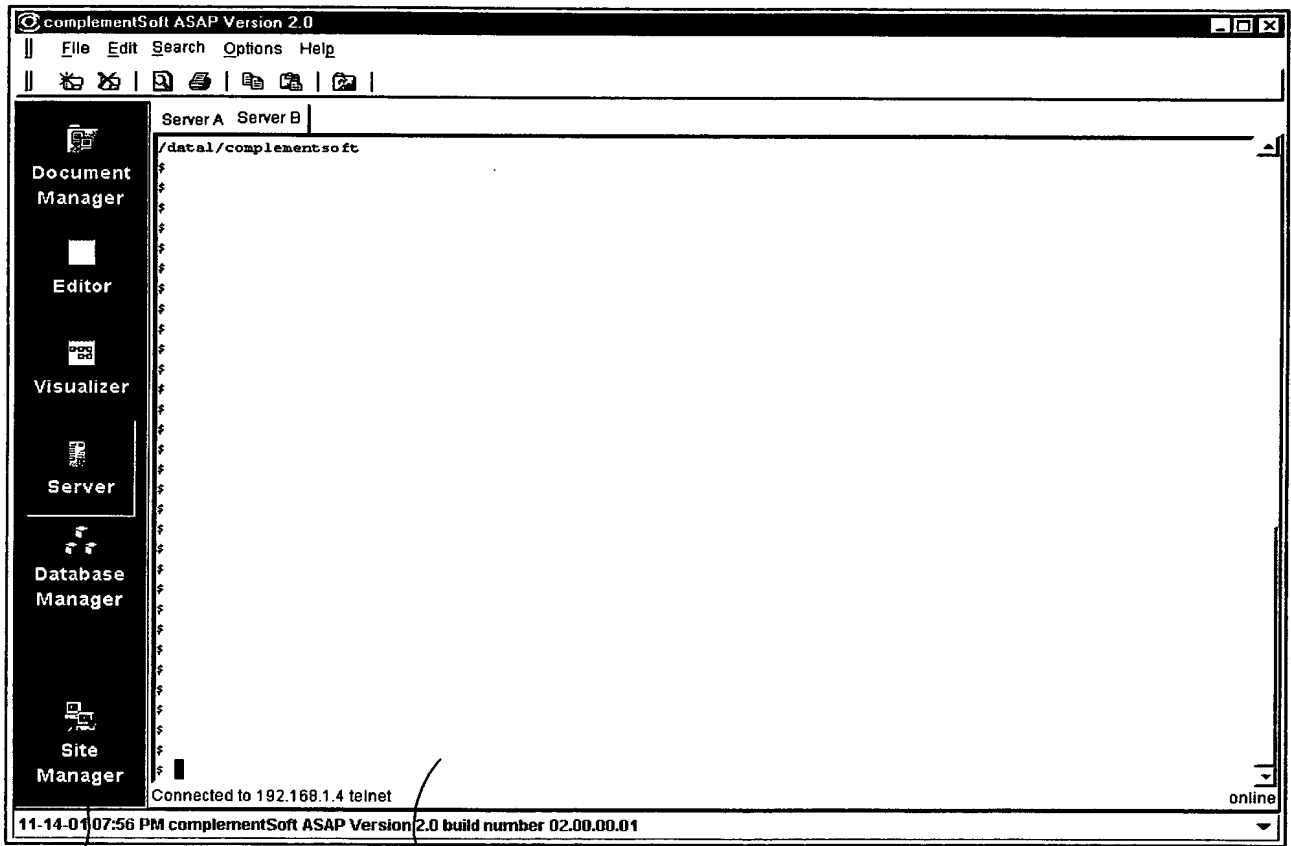


48

121

FIG. 9

120



48

162

FIG. 10

160

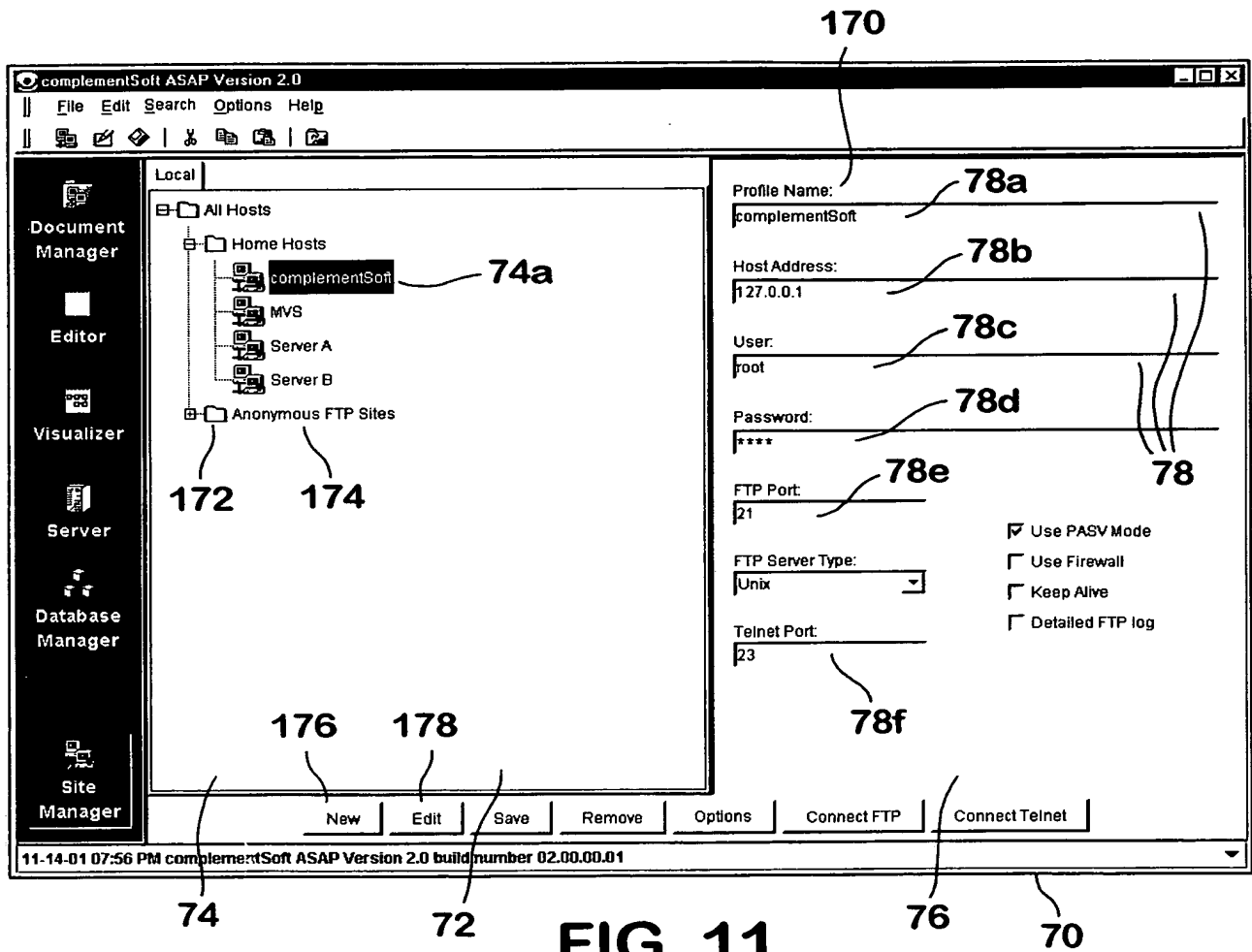
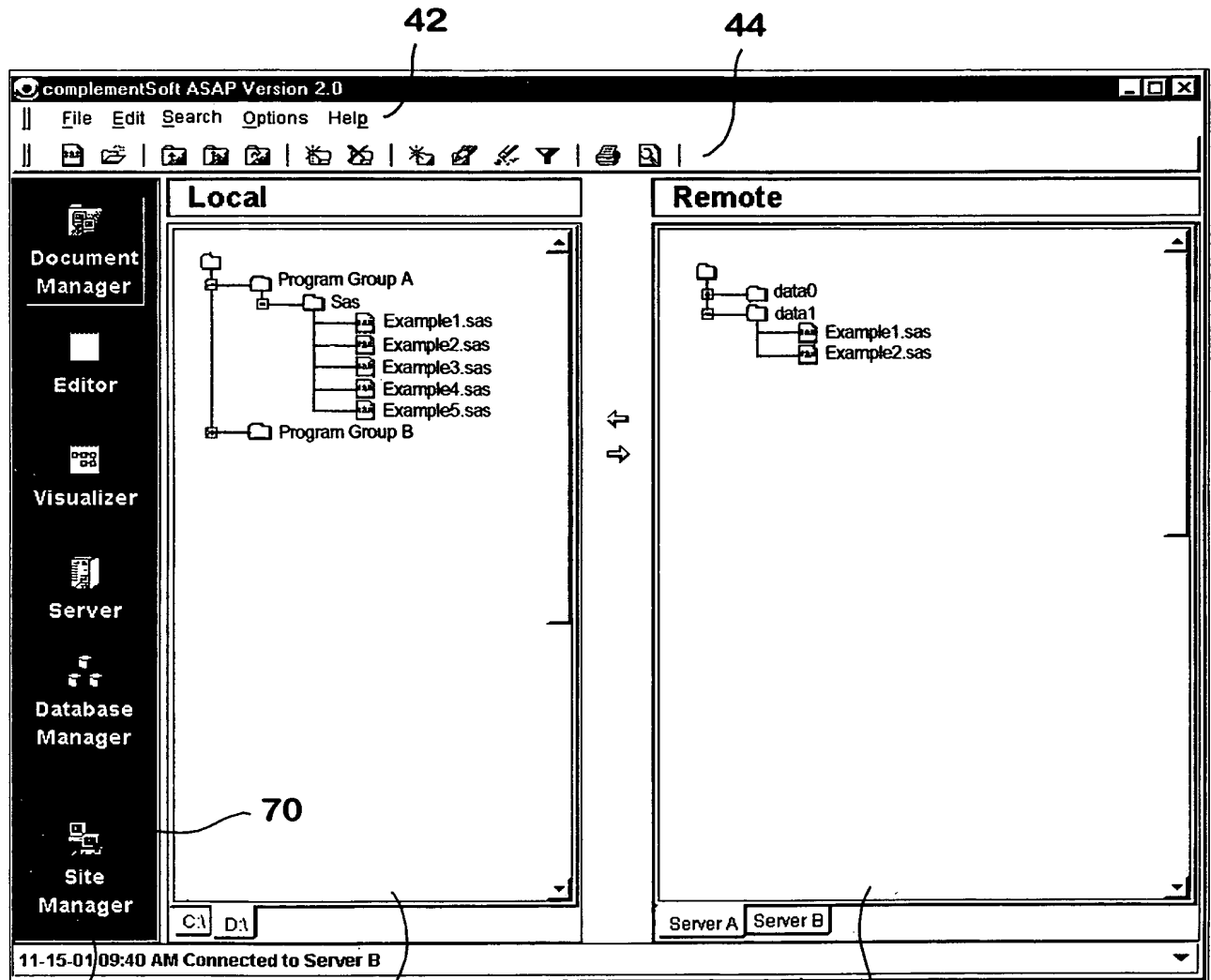


FIG. 11



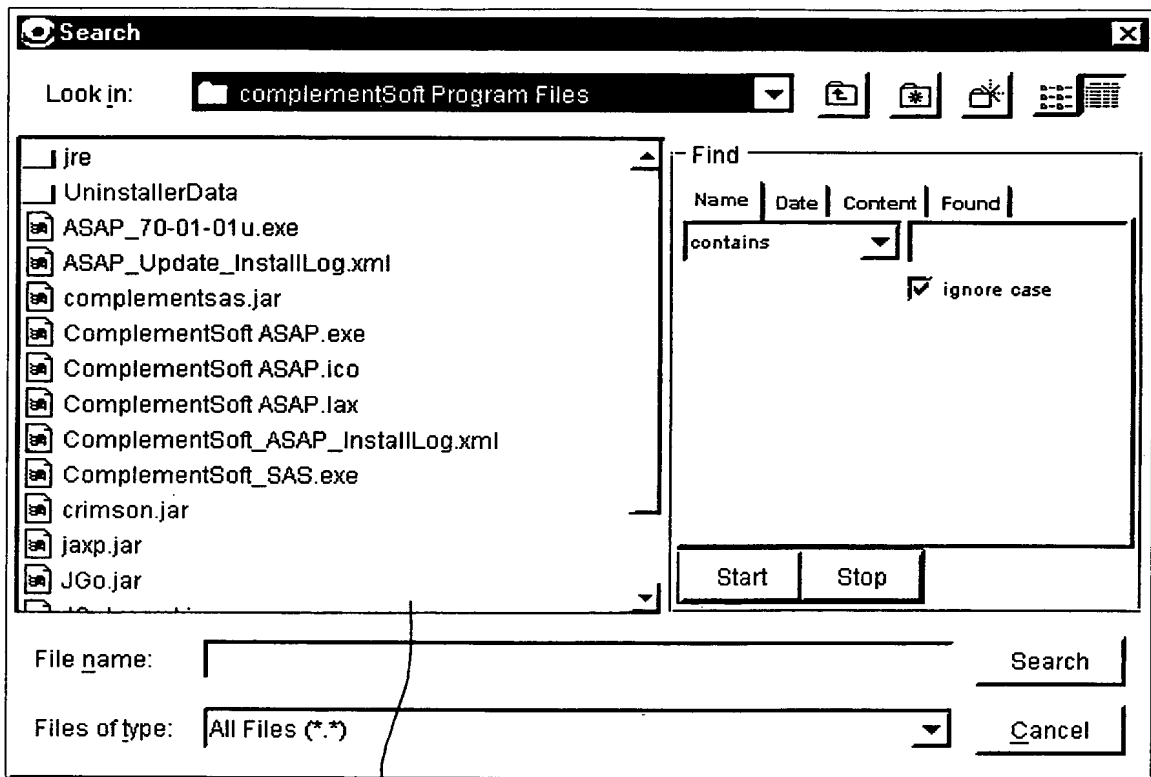
48

172

FIG. 12

174

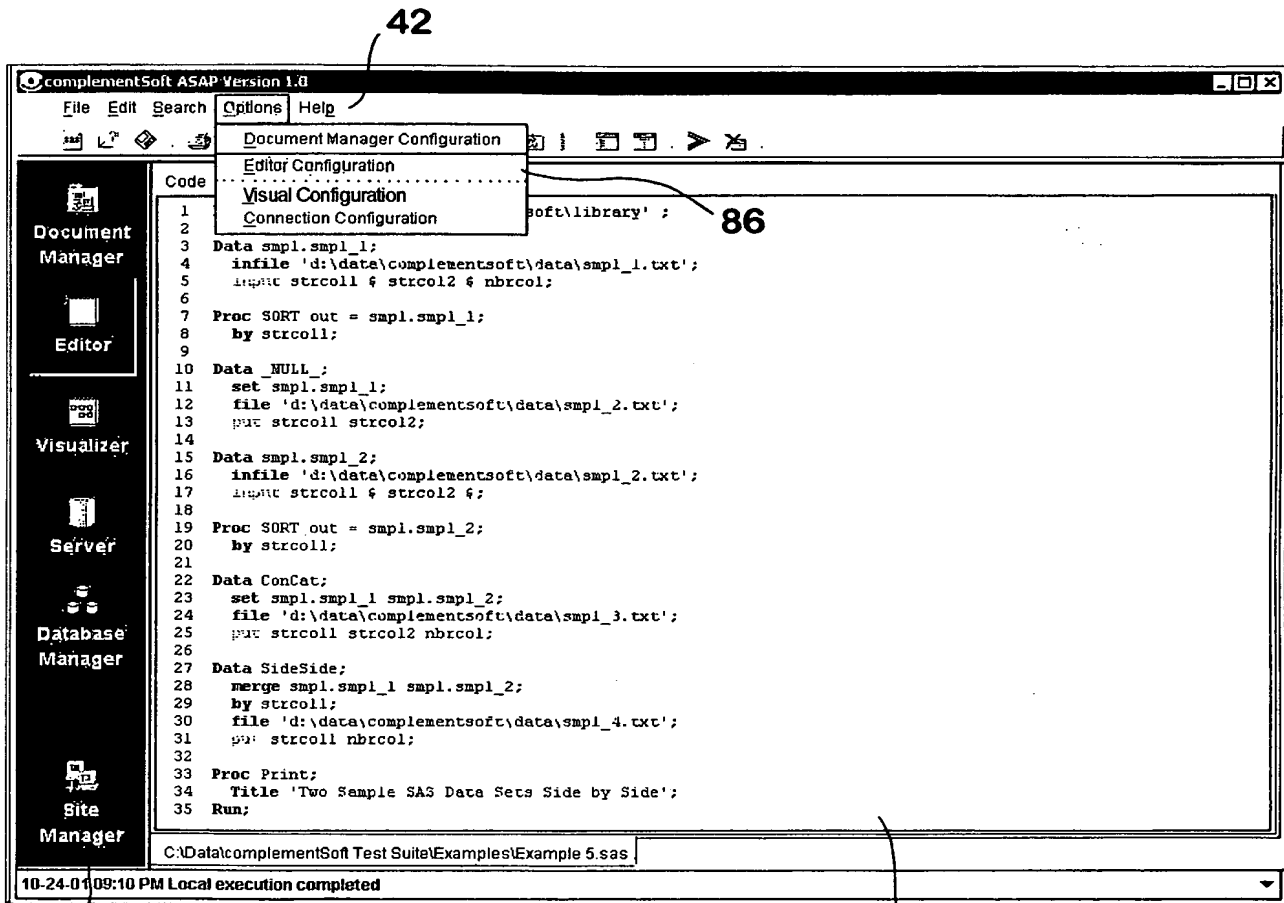
60



69a

FIG. 13

69



48

FIG. 14a

82

80

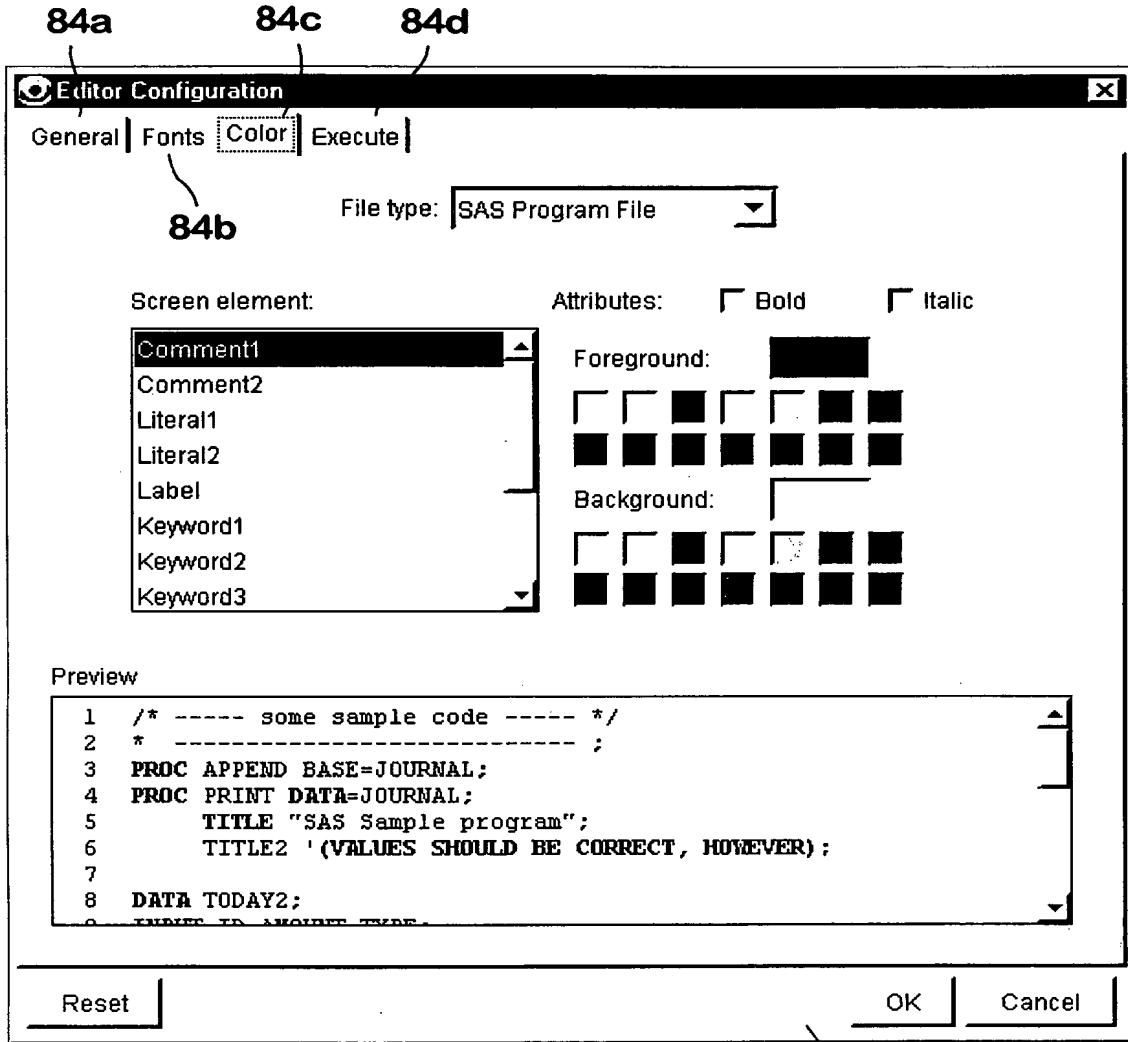


FIG. 14b

84

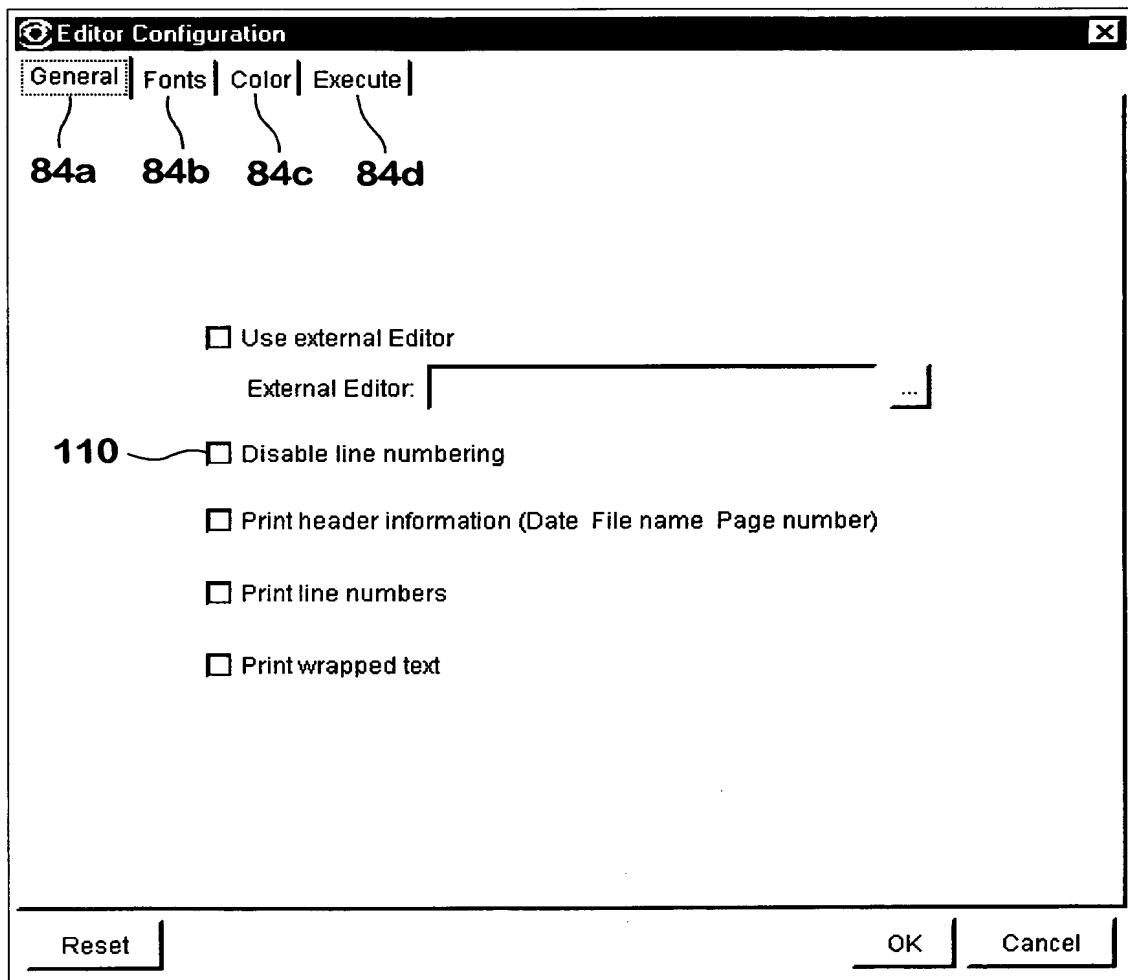


FIG. 14c

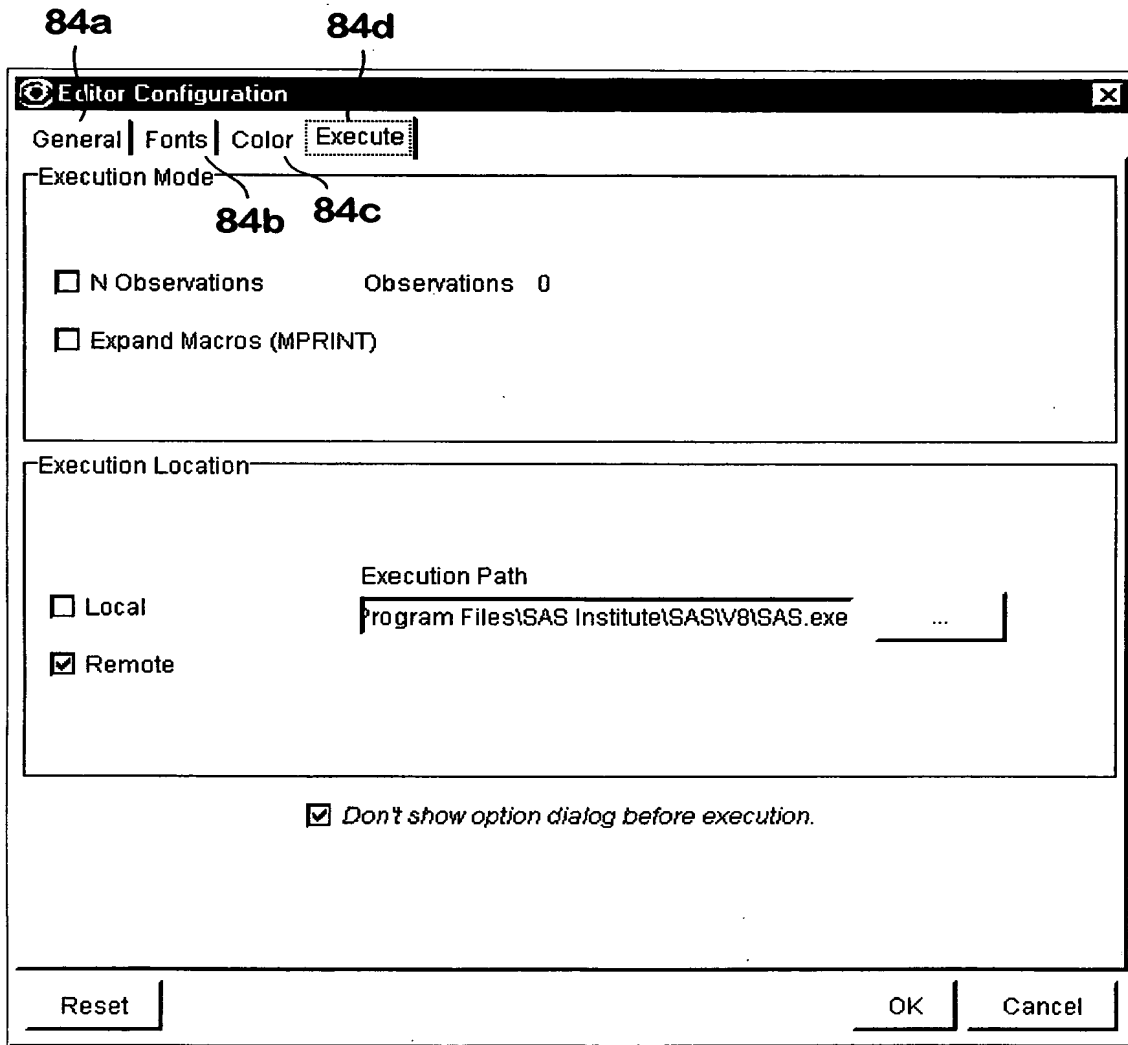


FIG. 14d

84a 84b 84c 84d

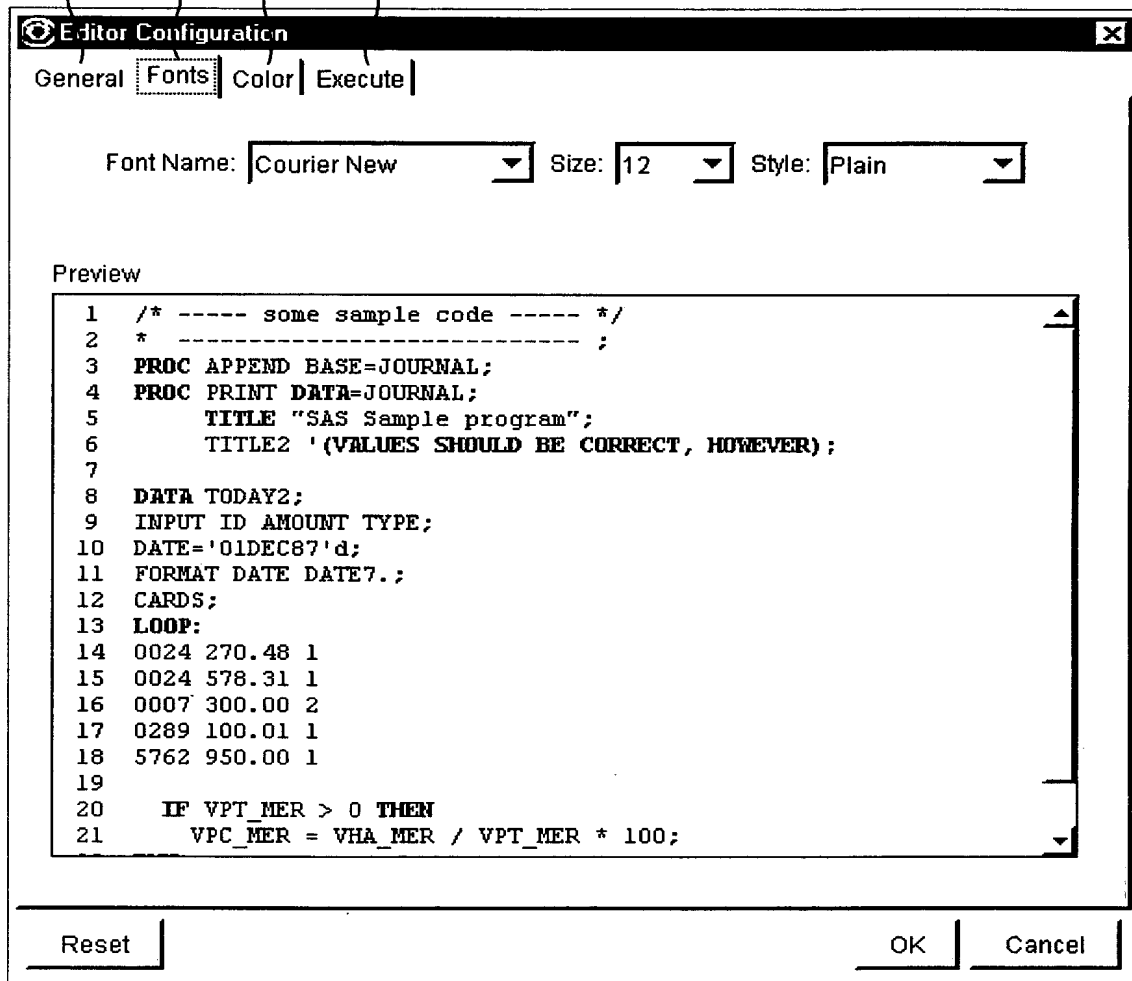
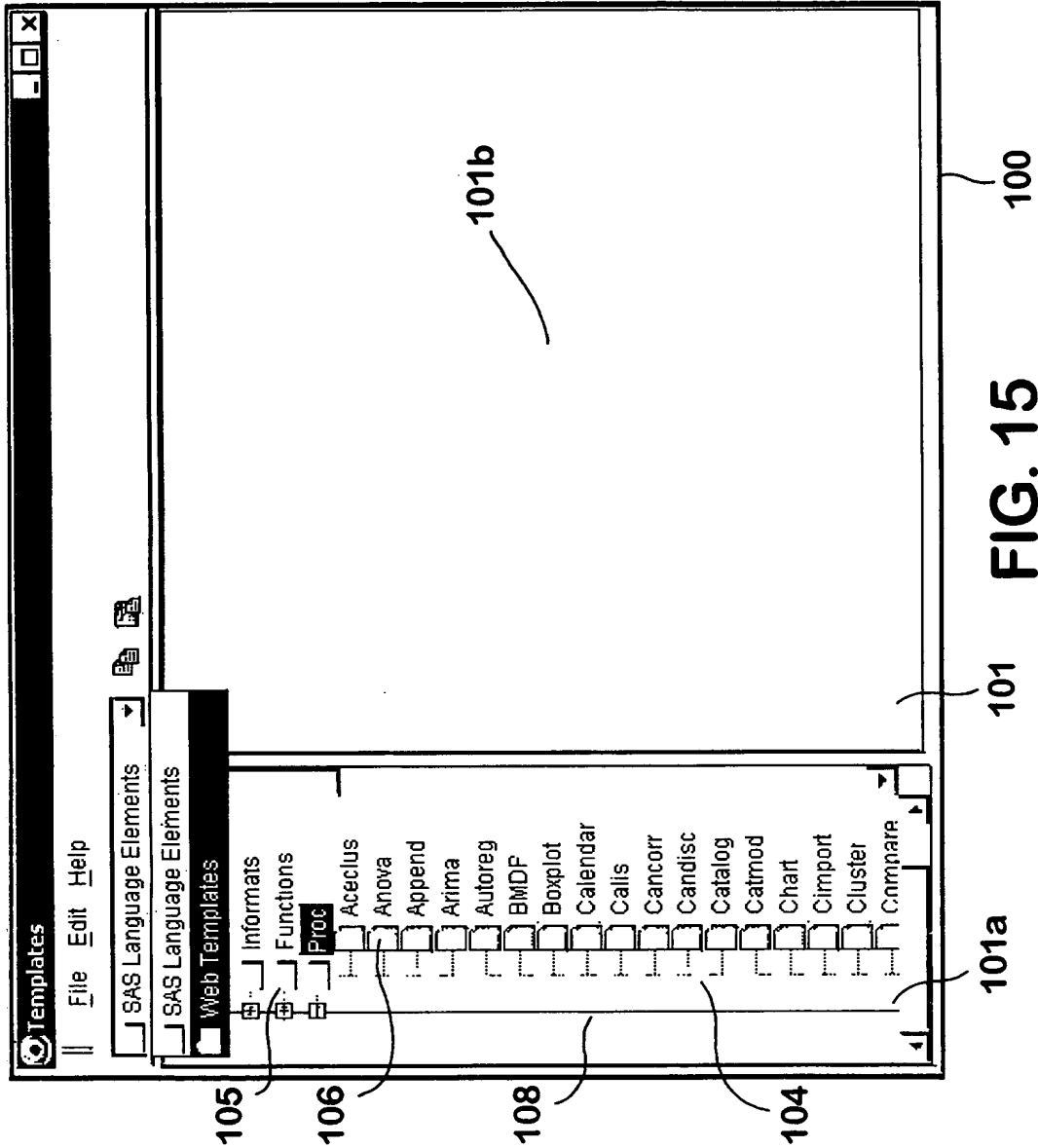
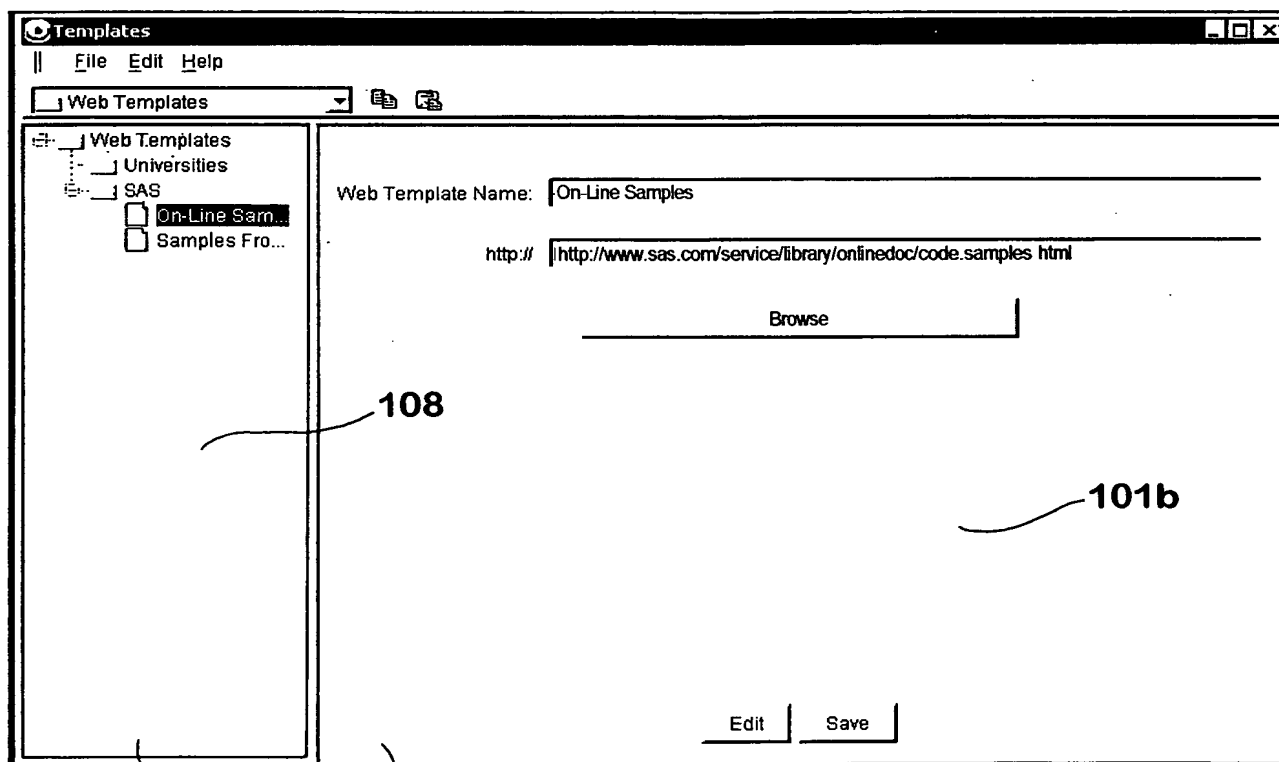


FIG. 14e





101a

101

FIG. 16

100

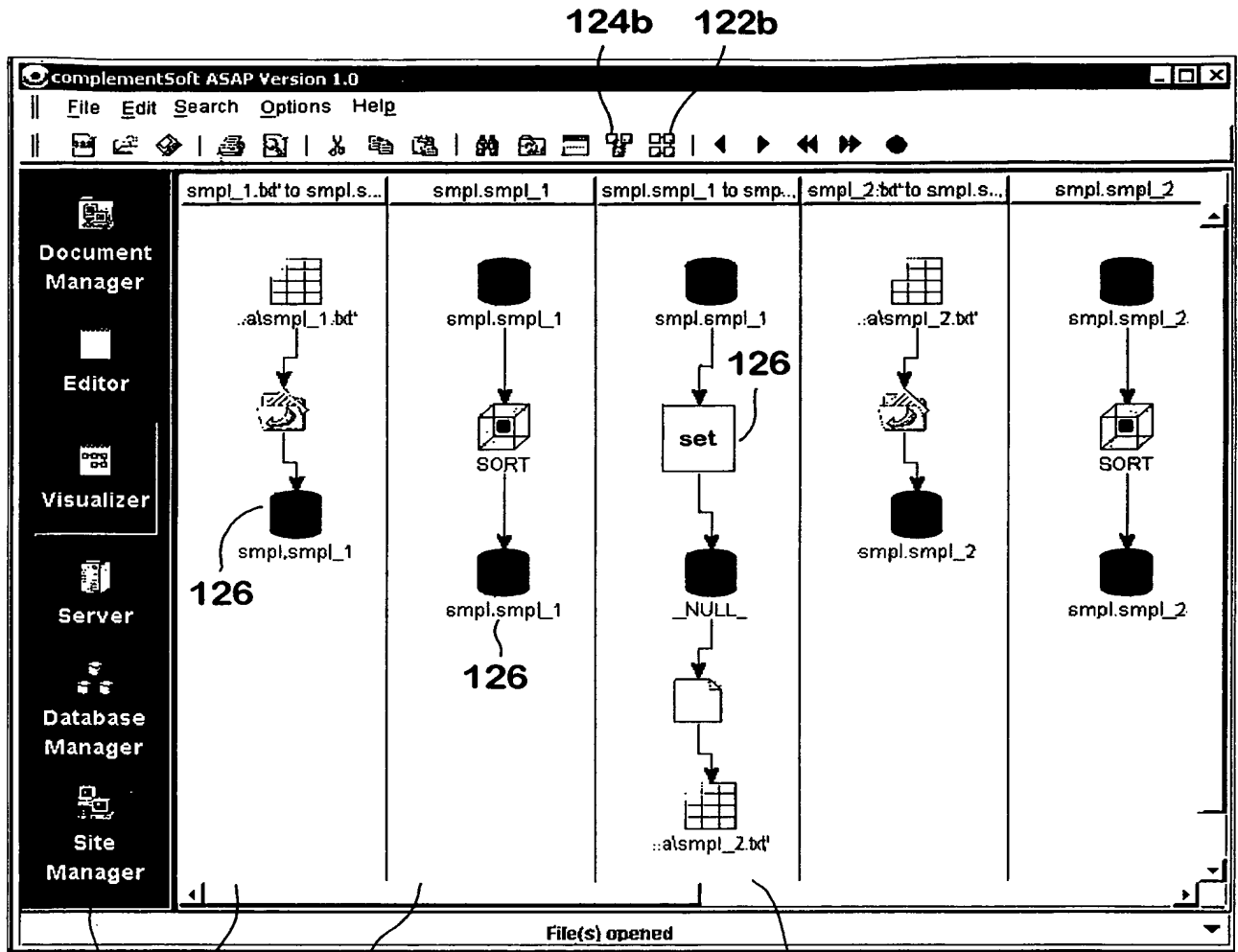


FIG. 17

48

121

124

124a

120

124b

122b

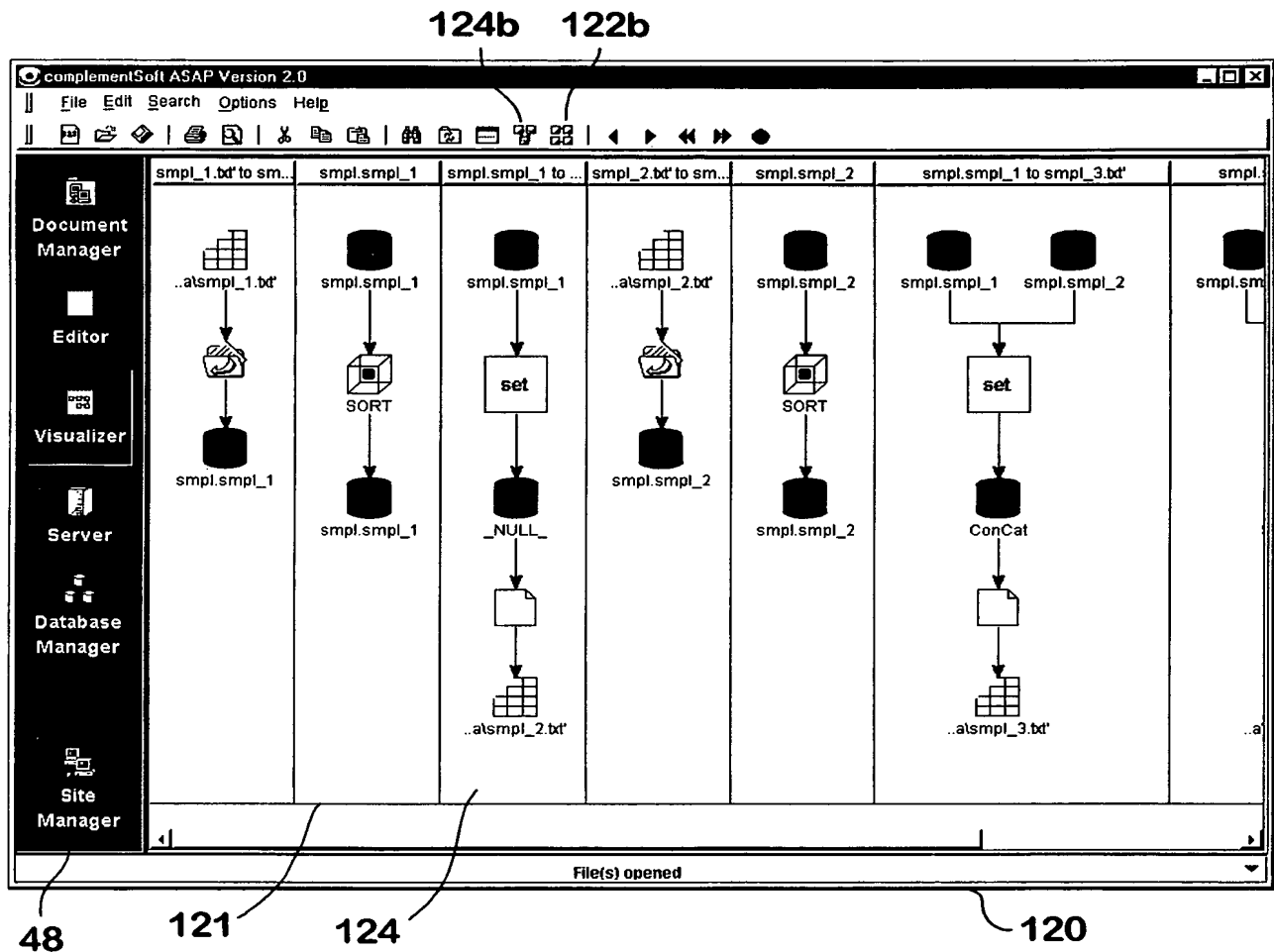
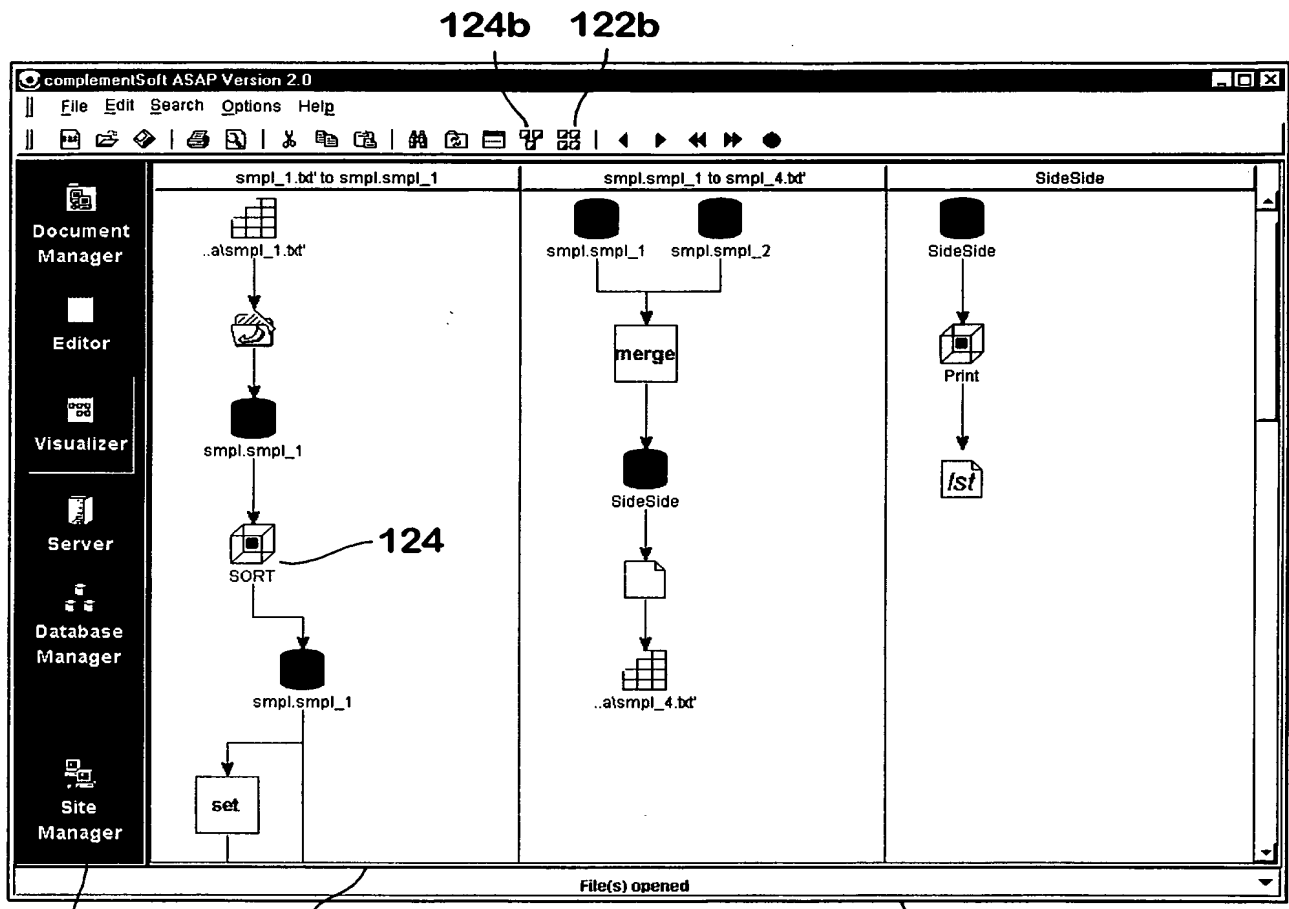


FIG. 18a



48

121

FIG. 18b

120

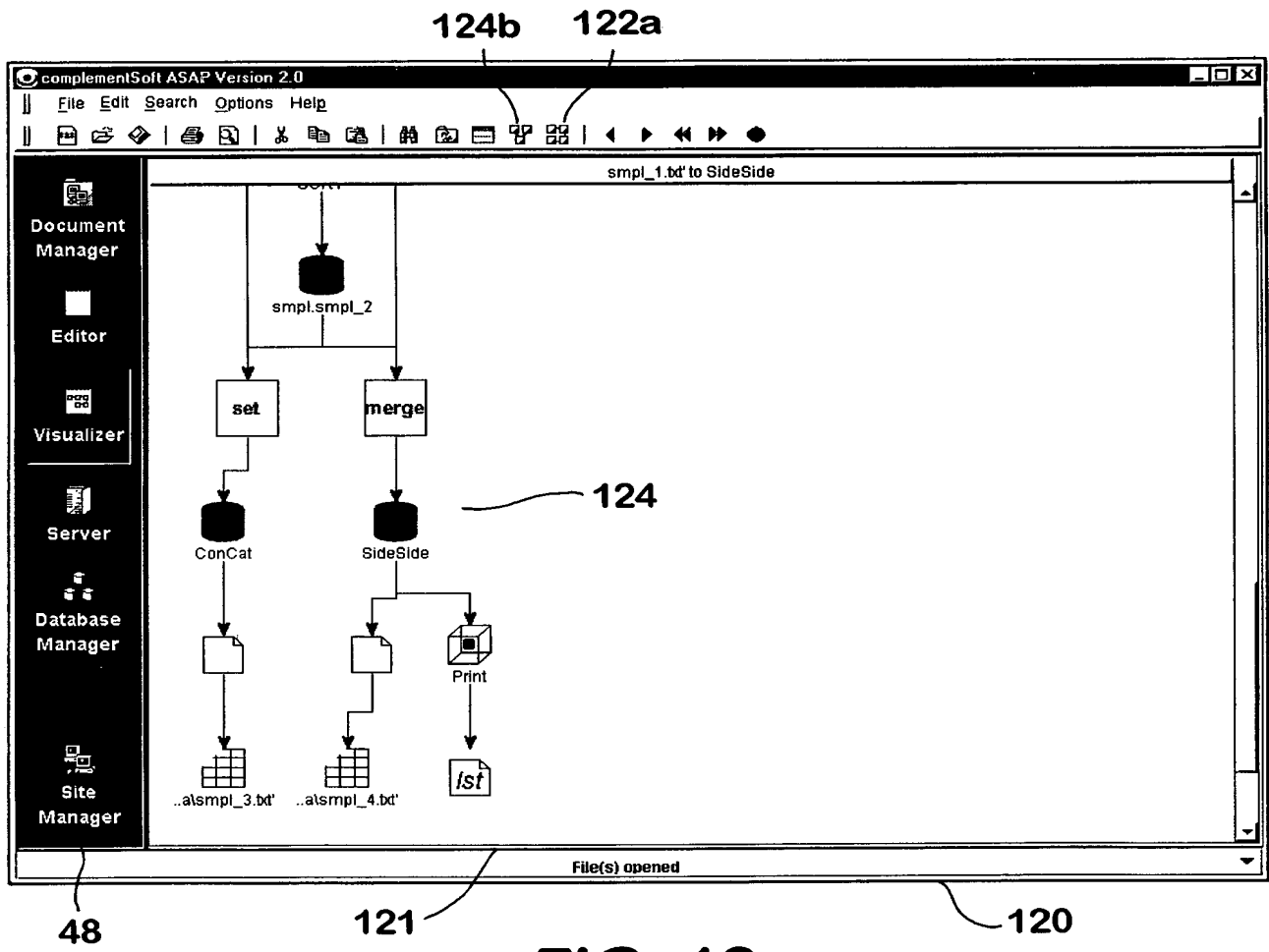
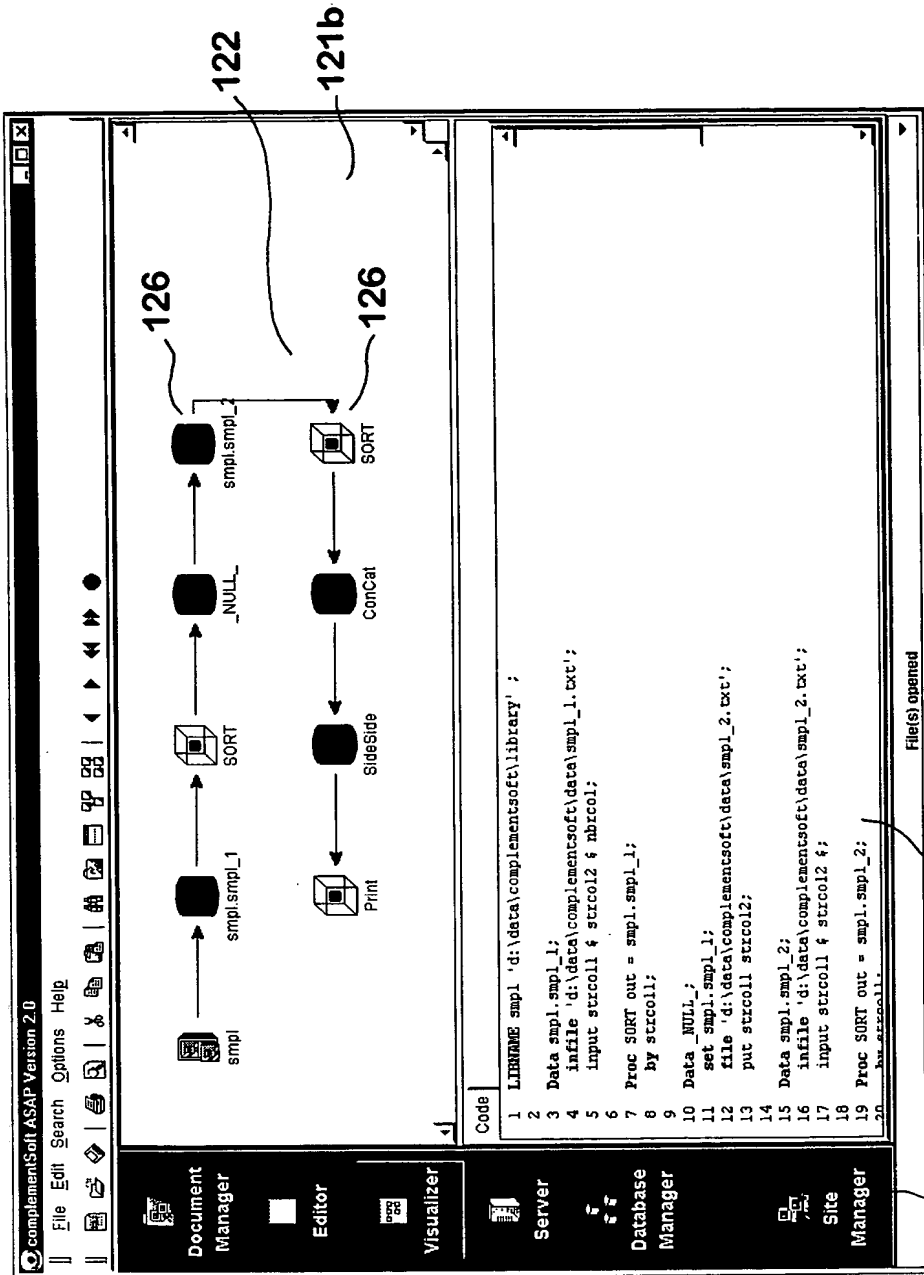


FIG. 18c



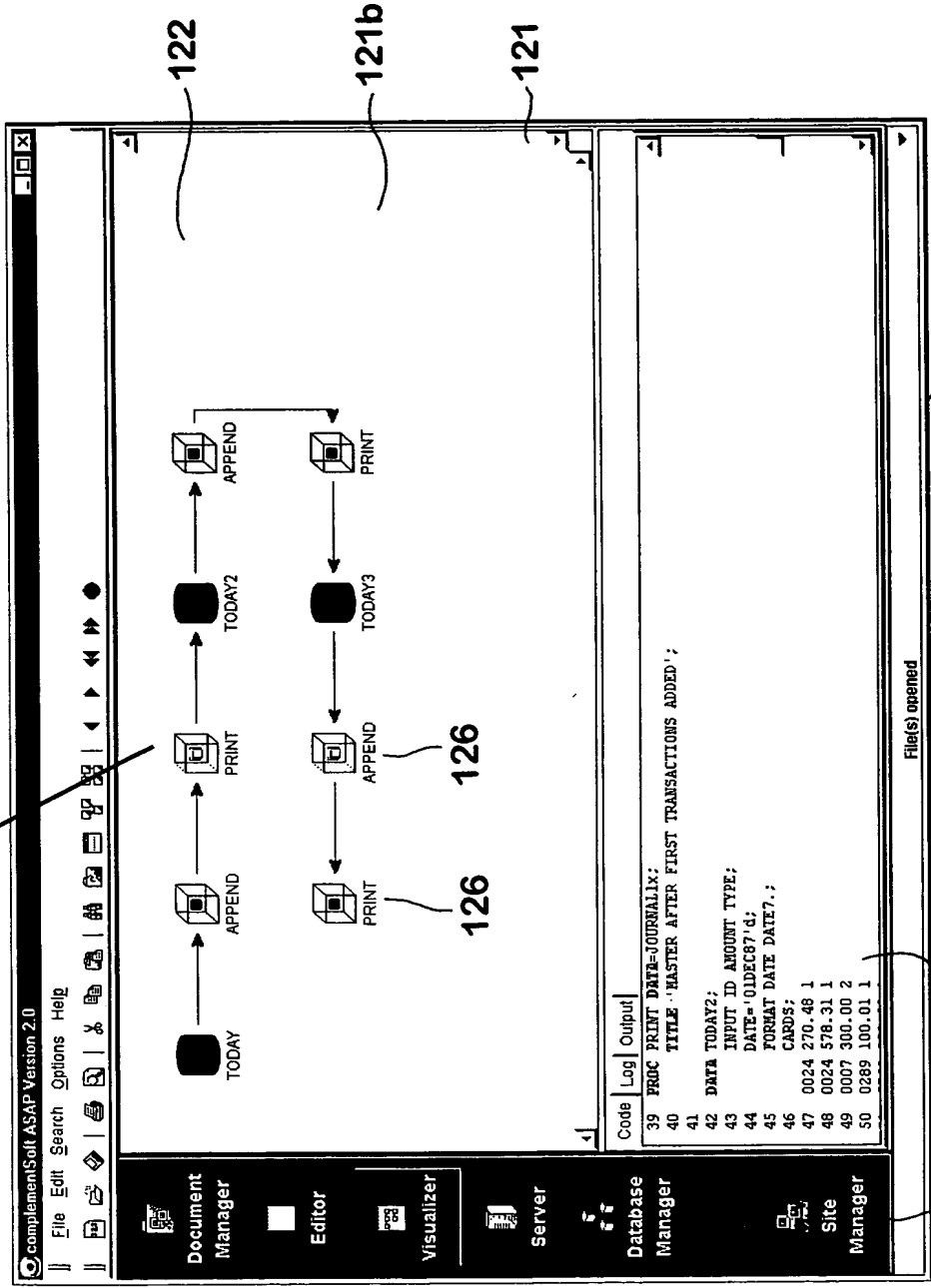
120

121c

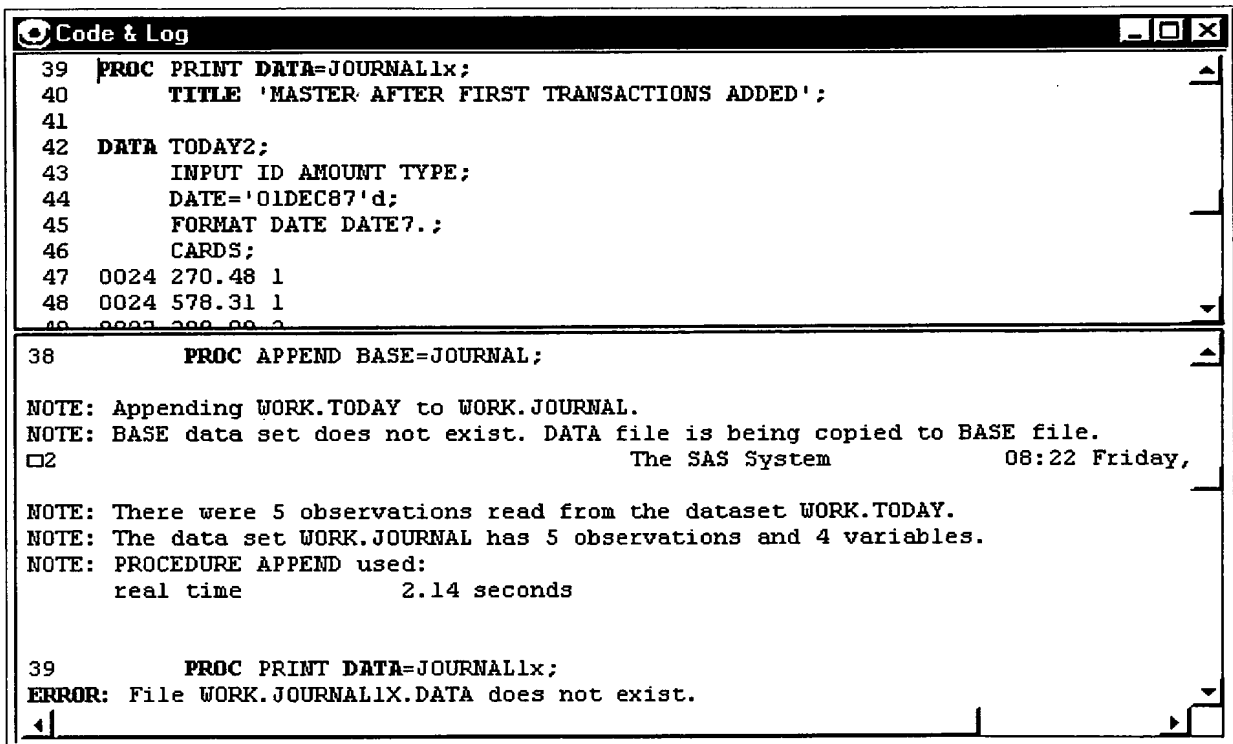
48

FIG. 19

Elements appear in red when they contain problematic code.



120
 121
 121b
 122
 126
 126
 48
FIG. 20



```
Code & Log
39 PROC PRINT DATA=JOURNAL1x;
40     TITLE 'MASTER AFTER FIRST TRANSACTIONS ADDED';
41
42 DATA TODAY2;
43     INPUT ID AMOUNT TYPE;
44     DATE='01DEC87'd;
45     FORMAT DATE DATE7.;
46     CARDS;
47 0024 270.48 1
48 0024 578.31 1
49 0007 300.00 2

38     PROC APPEND BASE=JOURNAL;

NOTE: Appending WORK.TODAY to WORK.JOURNAL.
NOTE: BASE data set does not exist. DATA file is being copied to BASE file.
□2                               The SAS System                08:22 Friday,

NOTE: There were 5 observations read from the dataset WORK.TODAY.
NOTE: The data set WORK.JOURNAL has 5 observations and 4 variables.
NOTE: PROCEDURE APPEND used:
      real time                2.14 seconds

39     PROC PRINT DATA=JOURNAL1x;
ERROR: File WORK.JOURNAL1X.DATA does not exist.
```

FIG. 20a

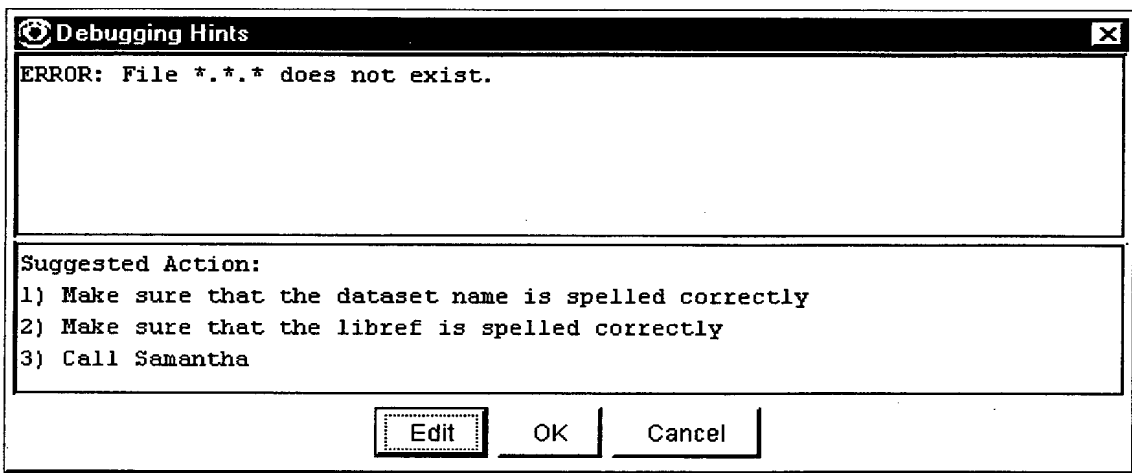


FIG. 20b

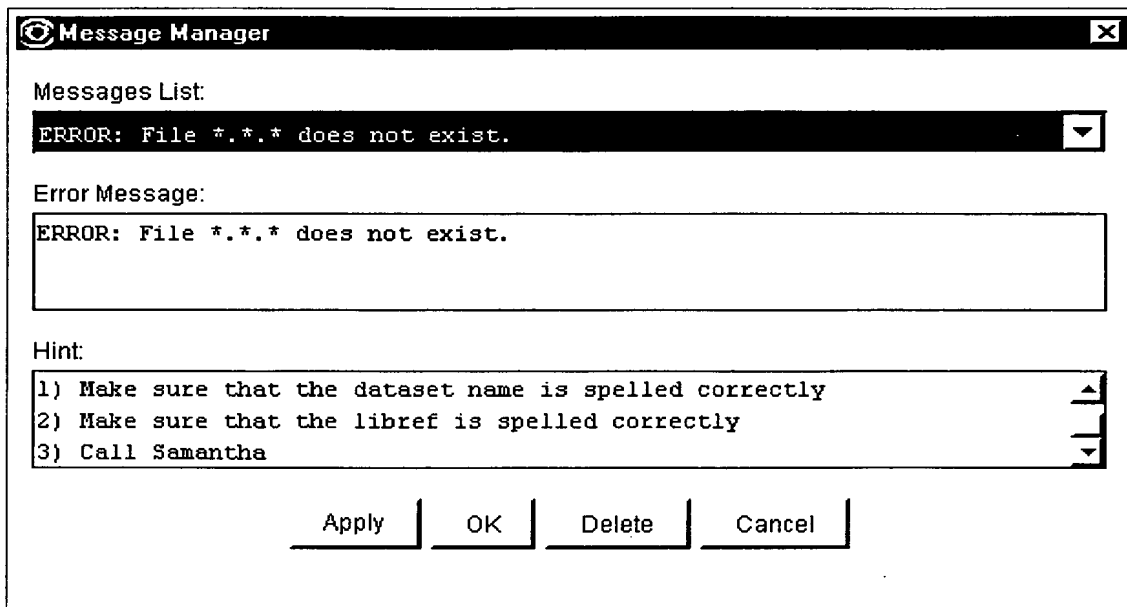


FIG. 20c

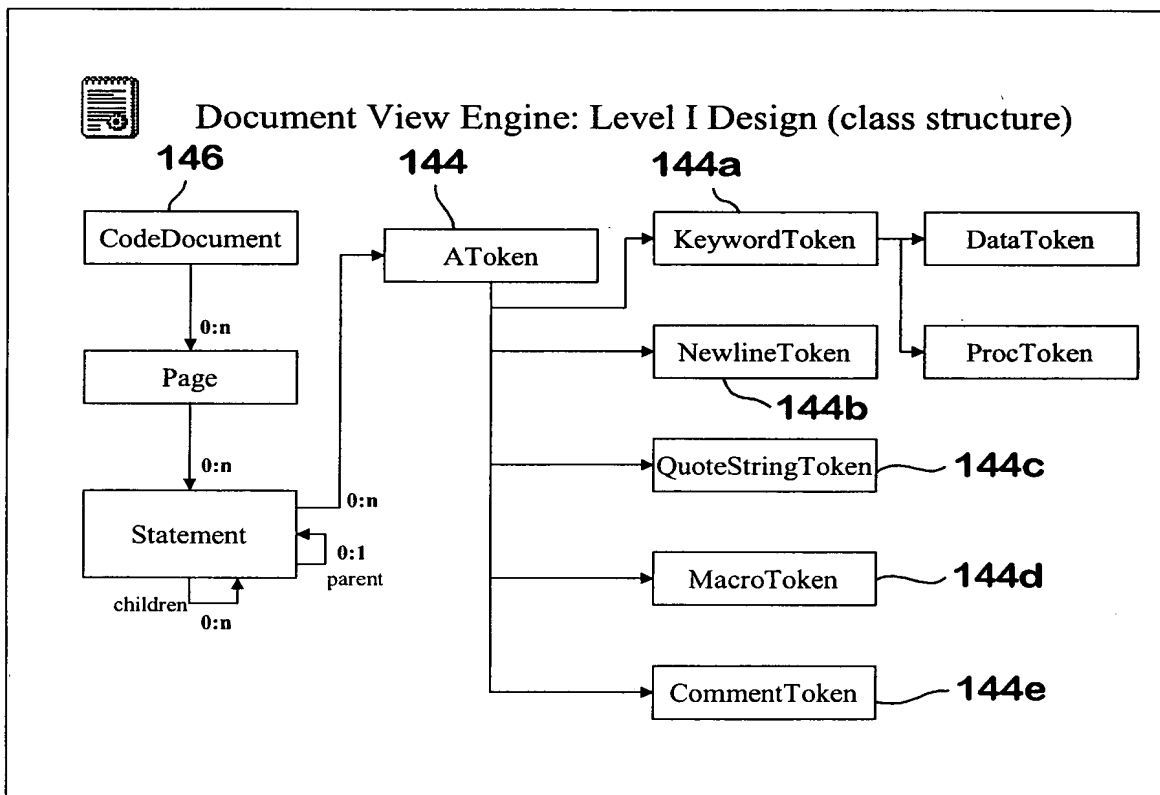


FIG. 21

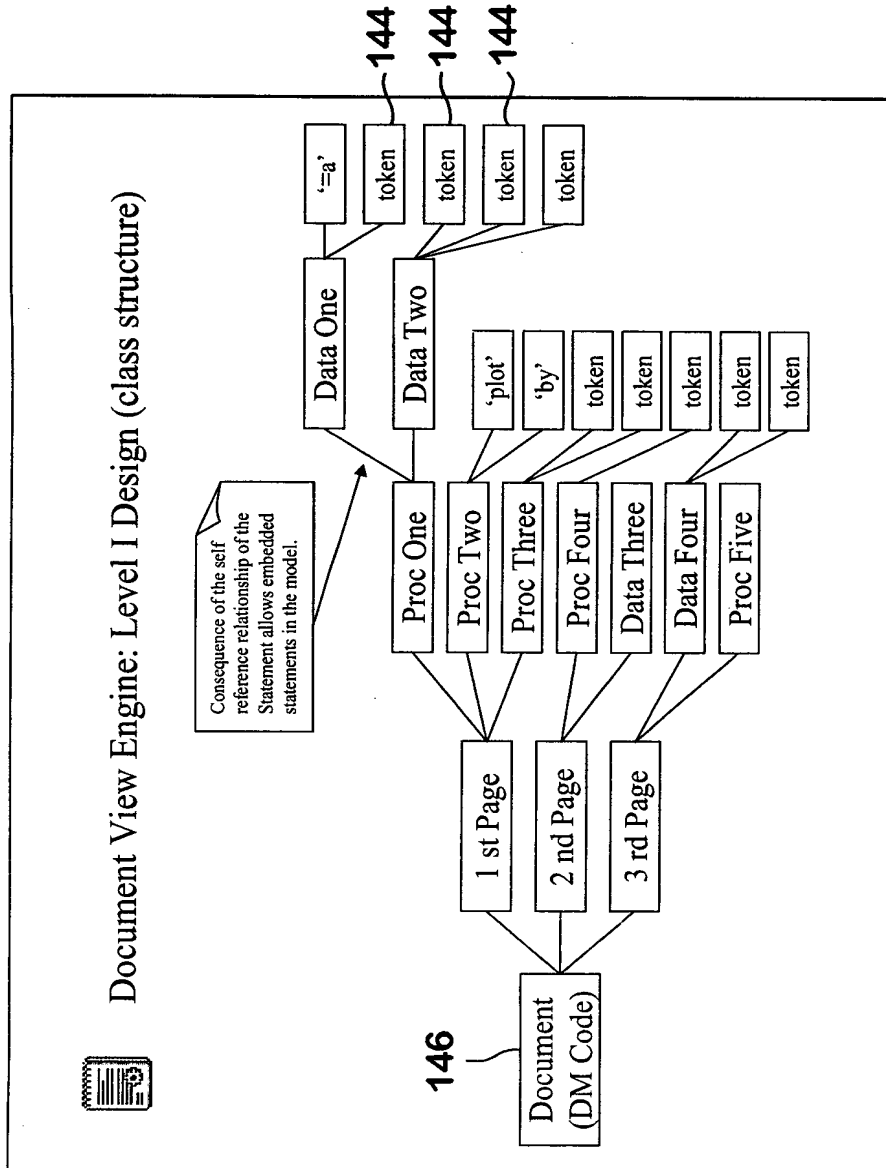
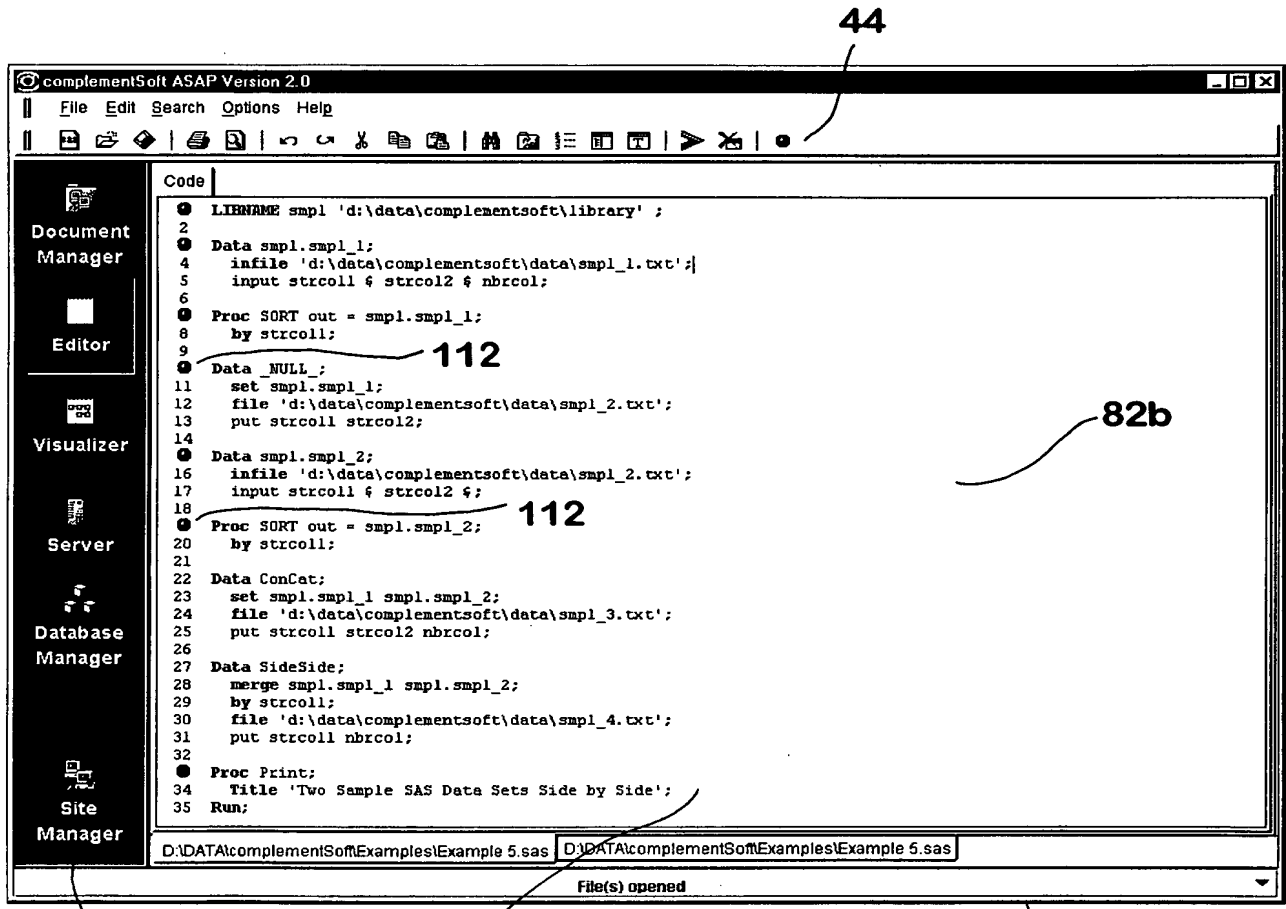


FIG. 22



48

82

80

FIG. 23